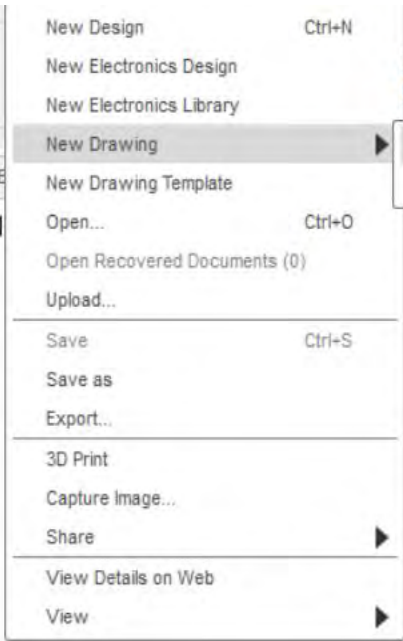


# Activity 13

# Orthographic drawing

## PDF Guide



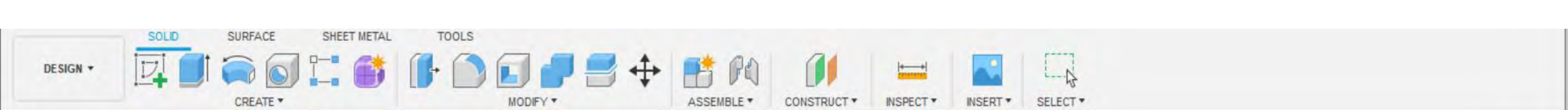
We are going to create an orthographic drawing.

- 1- Click File
- 2- Click New Drawing
- 3- Select From Design



COMMENTS

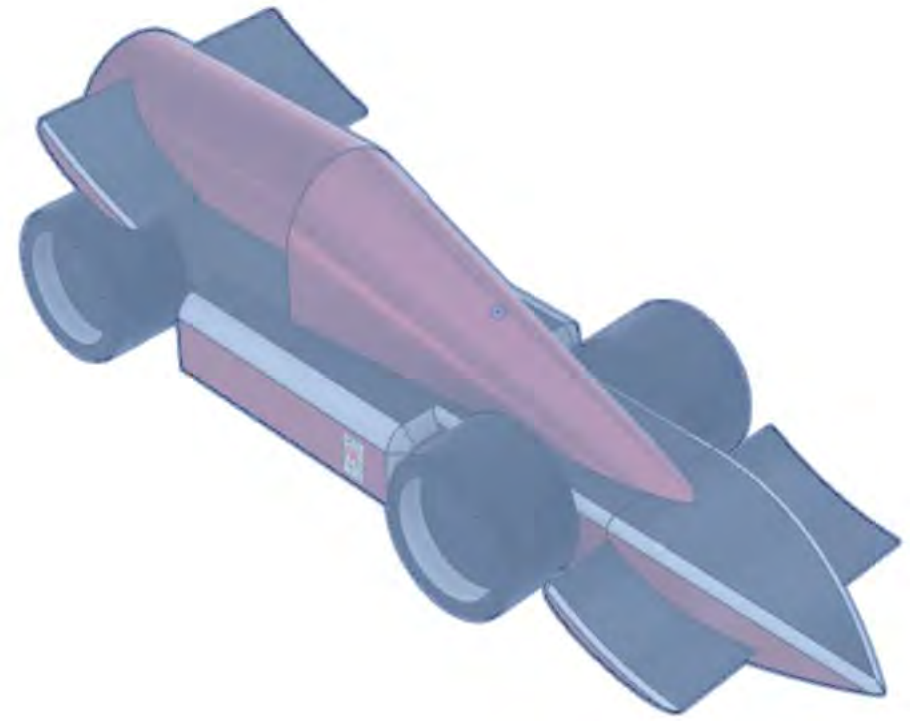




BROWSER

- Quick Appearance v3
- Document Settings
- Named Views
- Origin
- Bodies
- Decals
- Sketches
- Construction

1- Select the design  
2- Select OK.



CREATE DRAWING

Reference

Contents: Full Assembly

Destination

Drawing: Create New

Template: From Scratch

Standard: ISO

Units: mm

Sheet Size: A3 (420mm x 297mm)

OK Cancel

COMMENTS



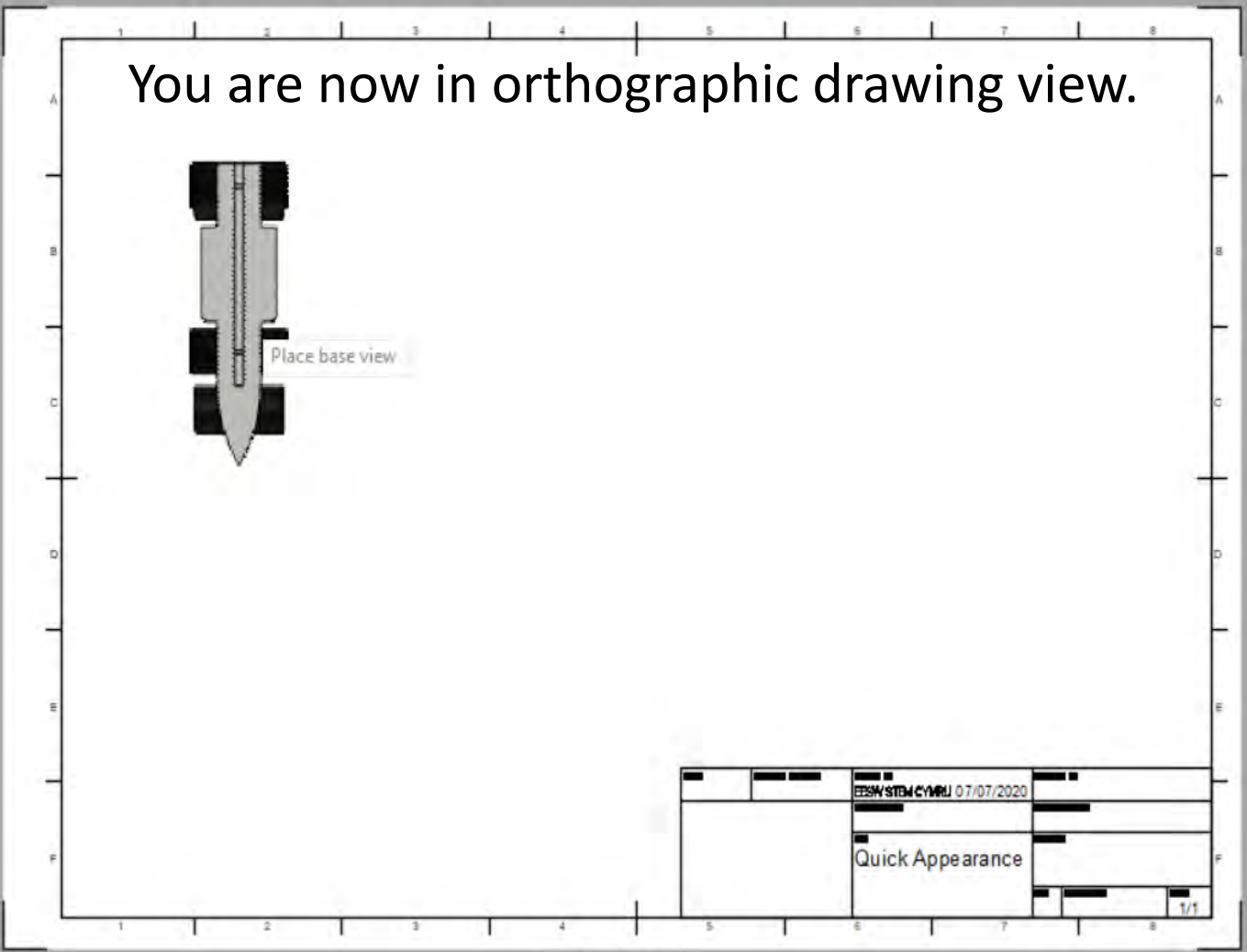
Quick Appearance v3





BROWSER

- (Unsaved)
- Document Settings
- Sheet1
- Sheet Settings



DRAWING VIEW

Reference Create New

Representation Model

▼ Appearance

Orientation Front

Style

Scale 1:2

▼ Edge Visibility

Tangent Edges

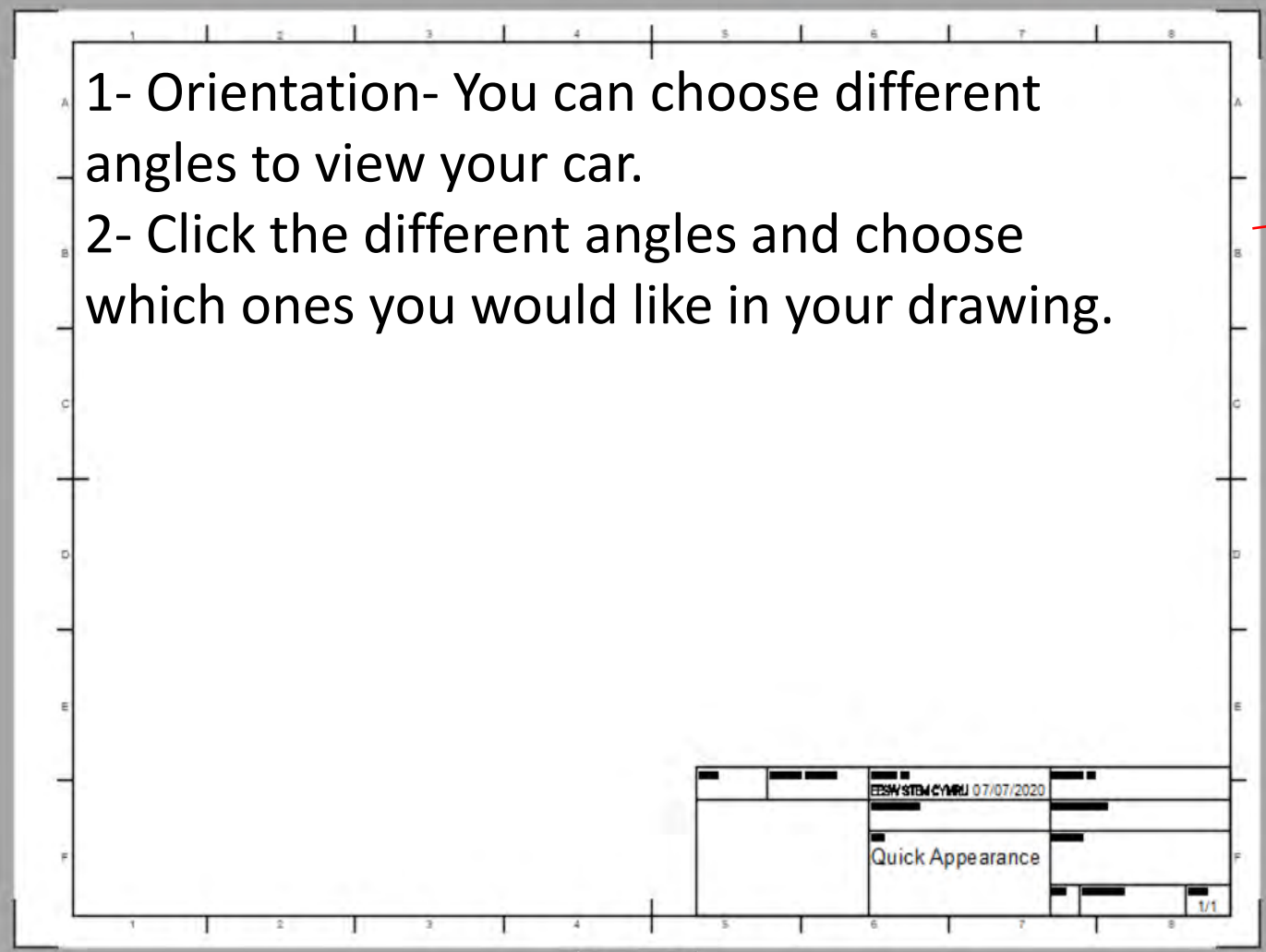
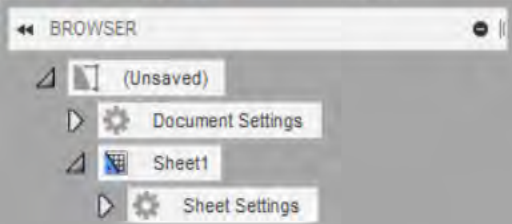
Interference Edges

Thread Edges

OK Cancel

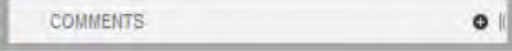
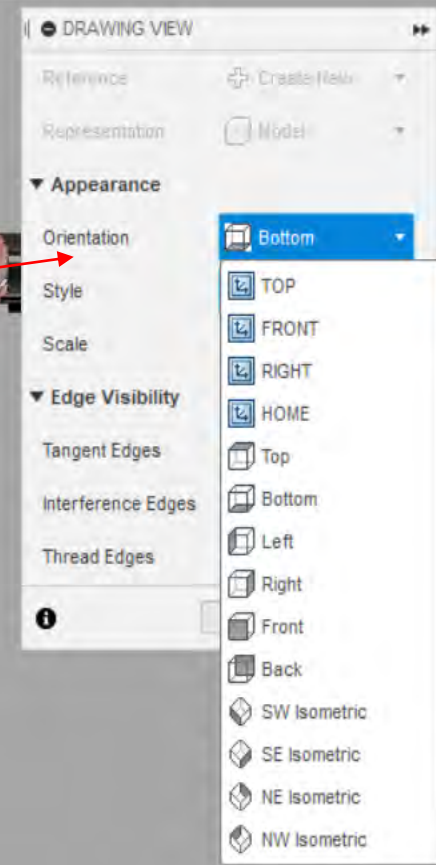
COMMENTS

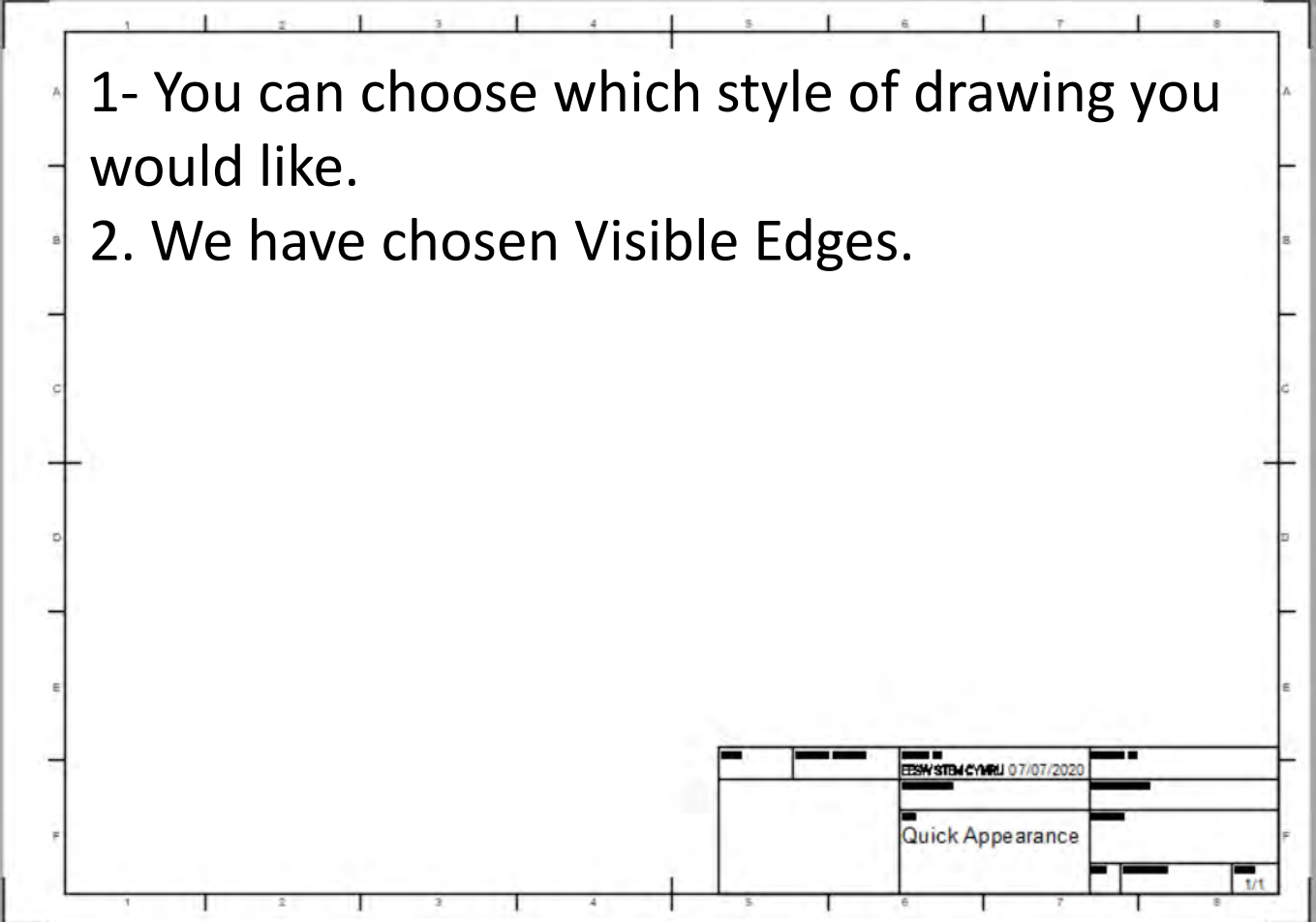
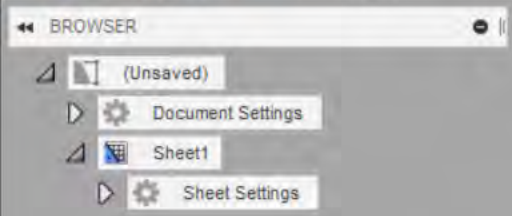




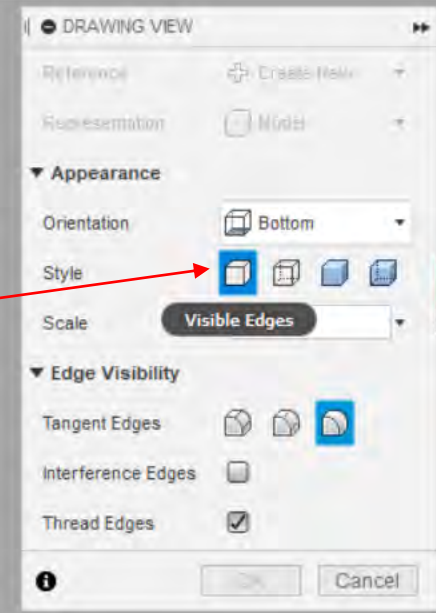
1- Orientation- You can choose different angles to view your car.

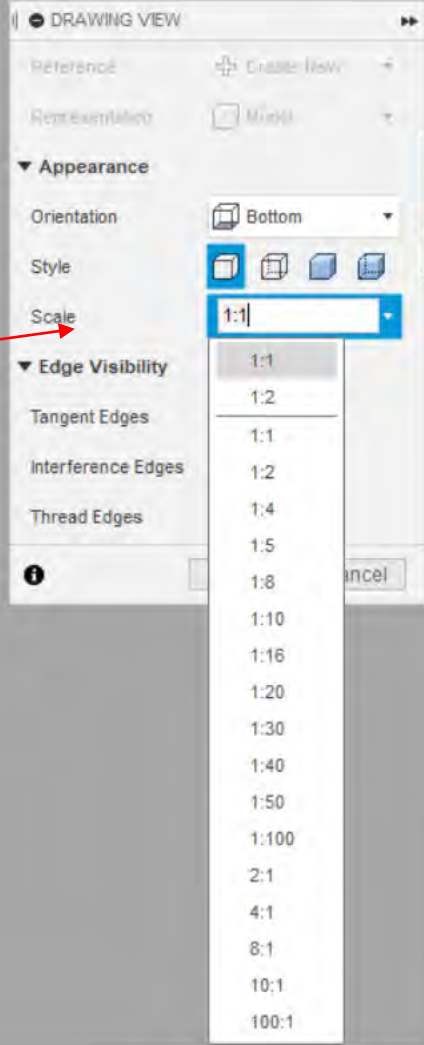
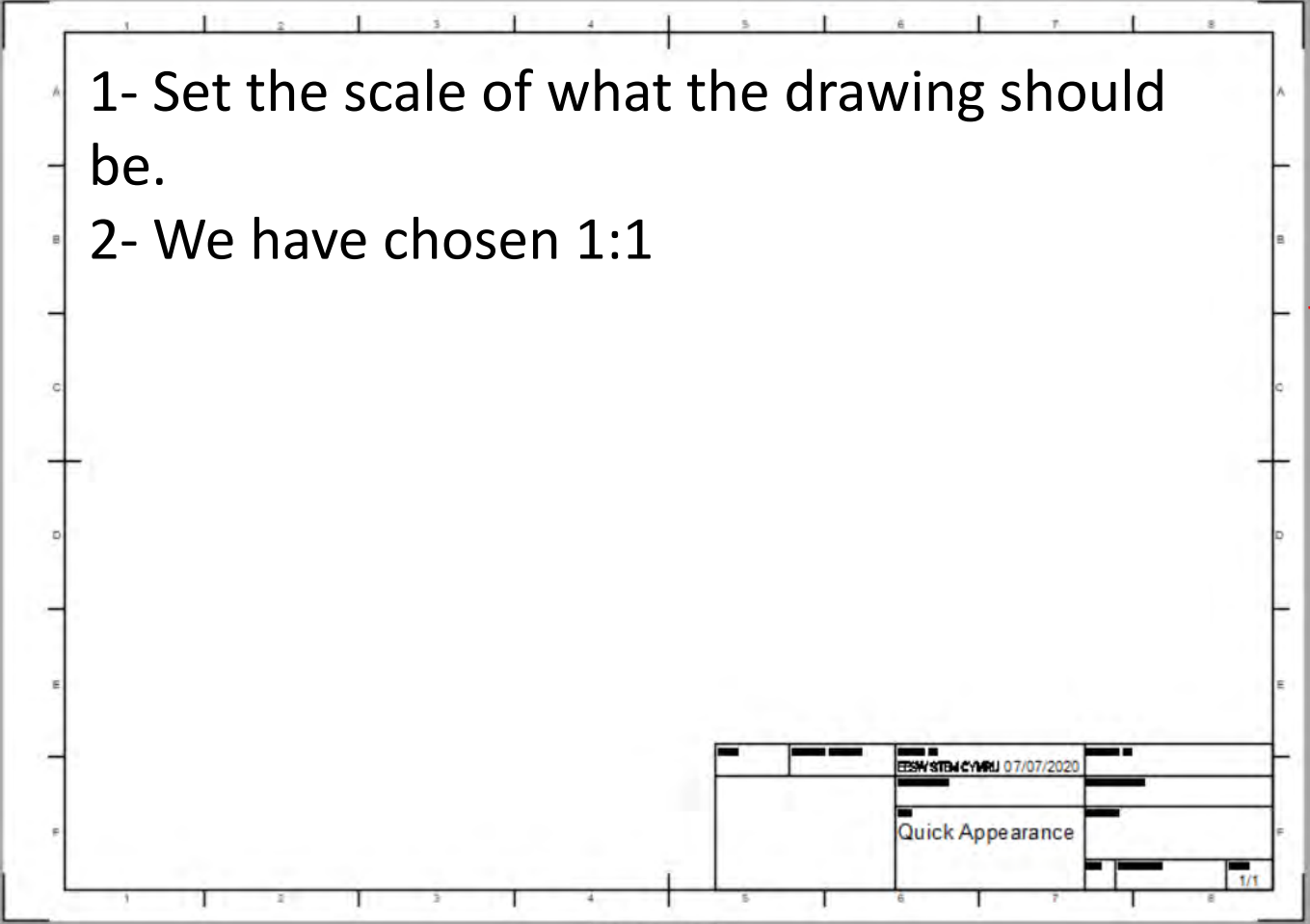
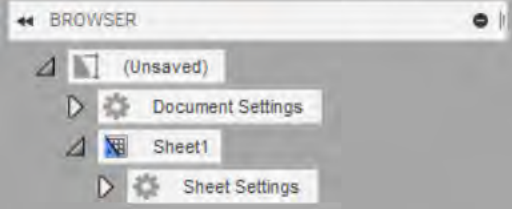
2- Click the different angles and choose which ones you would like in your drawing.

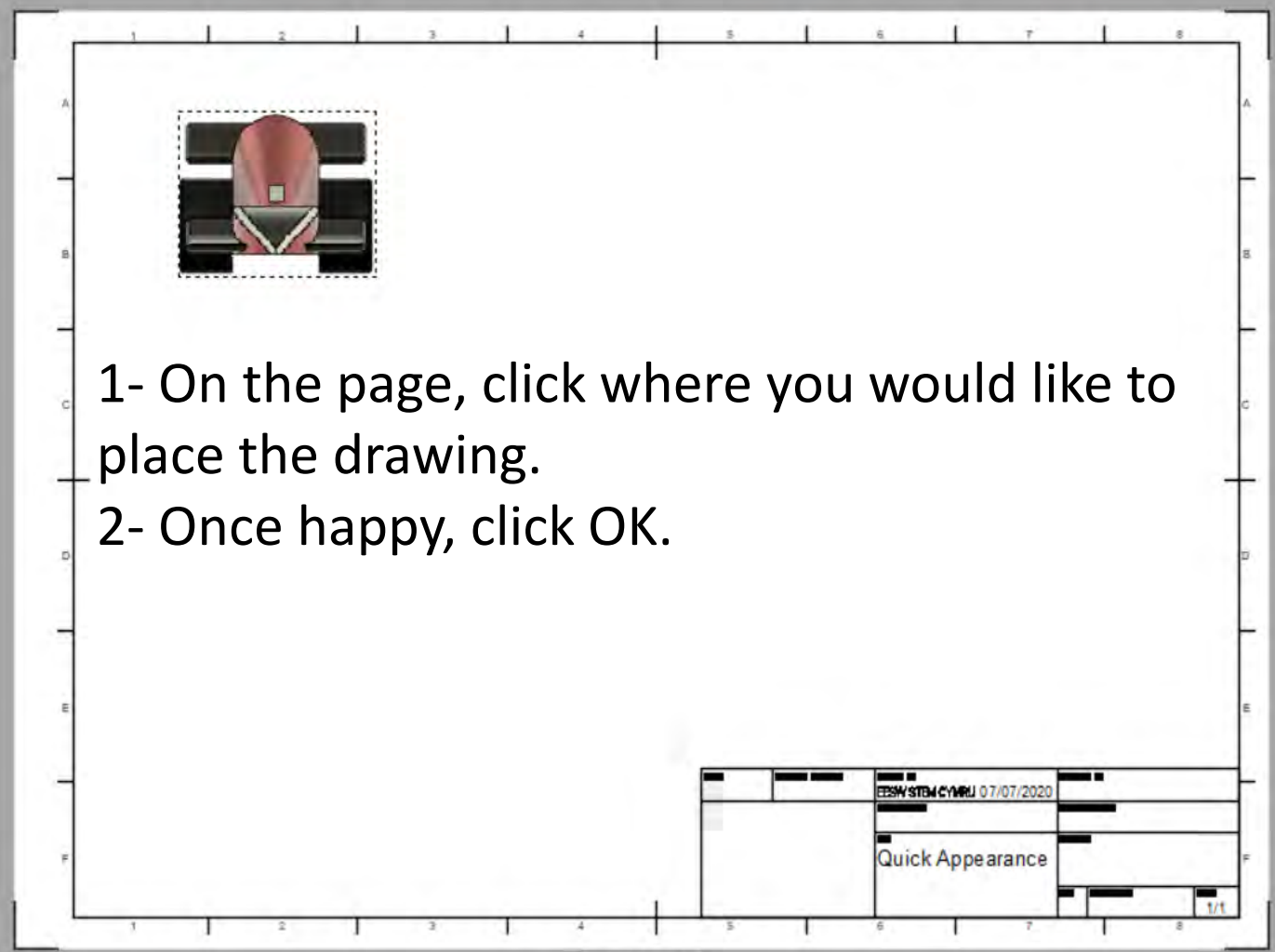
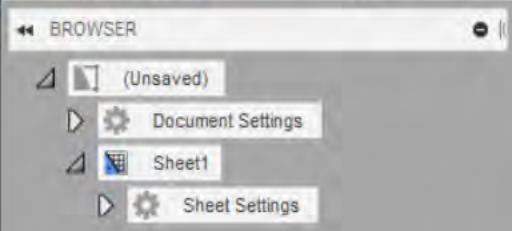




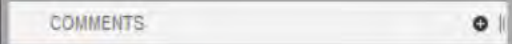
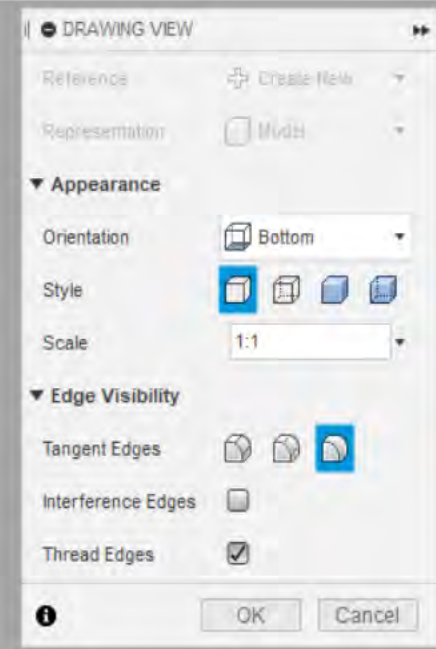
- 1- You can choose which style of drawing you would like.
- 2. We have chosen Visible Edges.







1- On the page, click where you would like to place the drawing.  
2- Once happy, click OK.



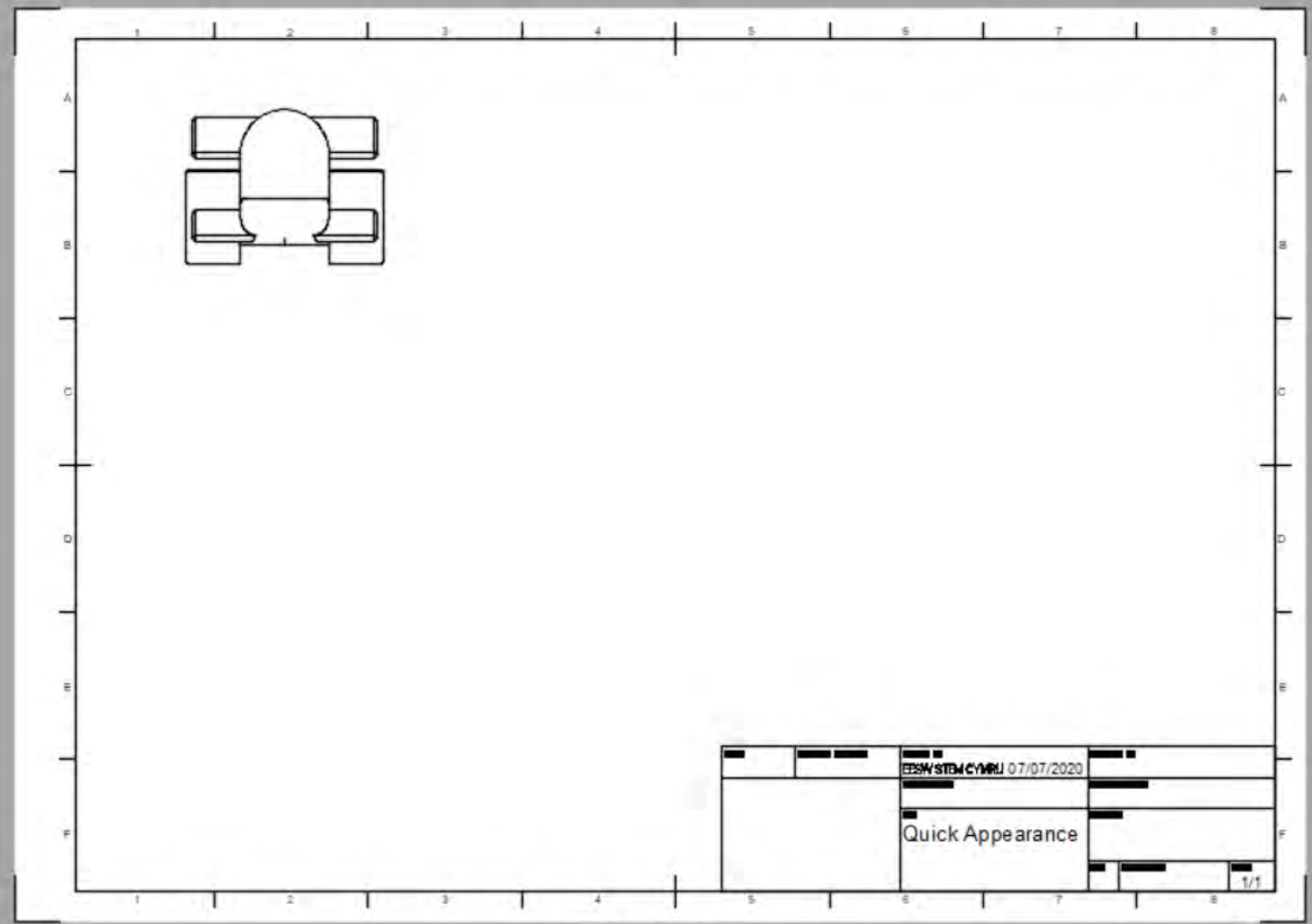


DRAWING

DRAWING VIEWS ▾ MODIFY ▾ GEOMETRY ▾ DIMENSIONS ▾ TEXT ▾ SYMBOLS ▾ INSERT ▾ TABLES ▾ OUTPUT ▾

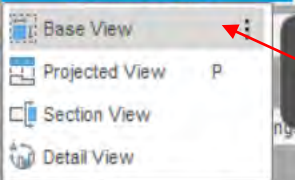
BROWSER

- (Unsaved)
- Document Settings
- Sheet1
  - Sheet Settings
  - Quick Appearance v3.1
    - Bodies
    - Sketches

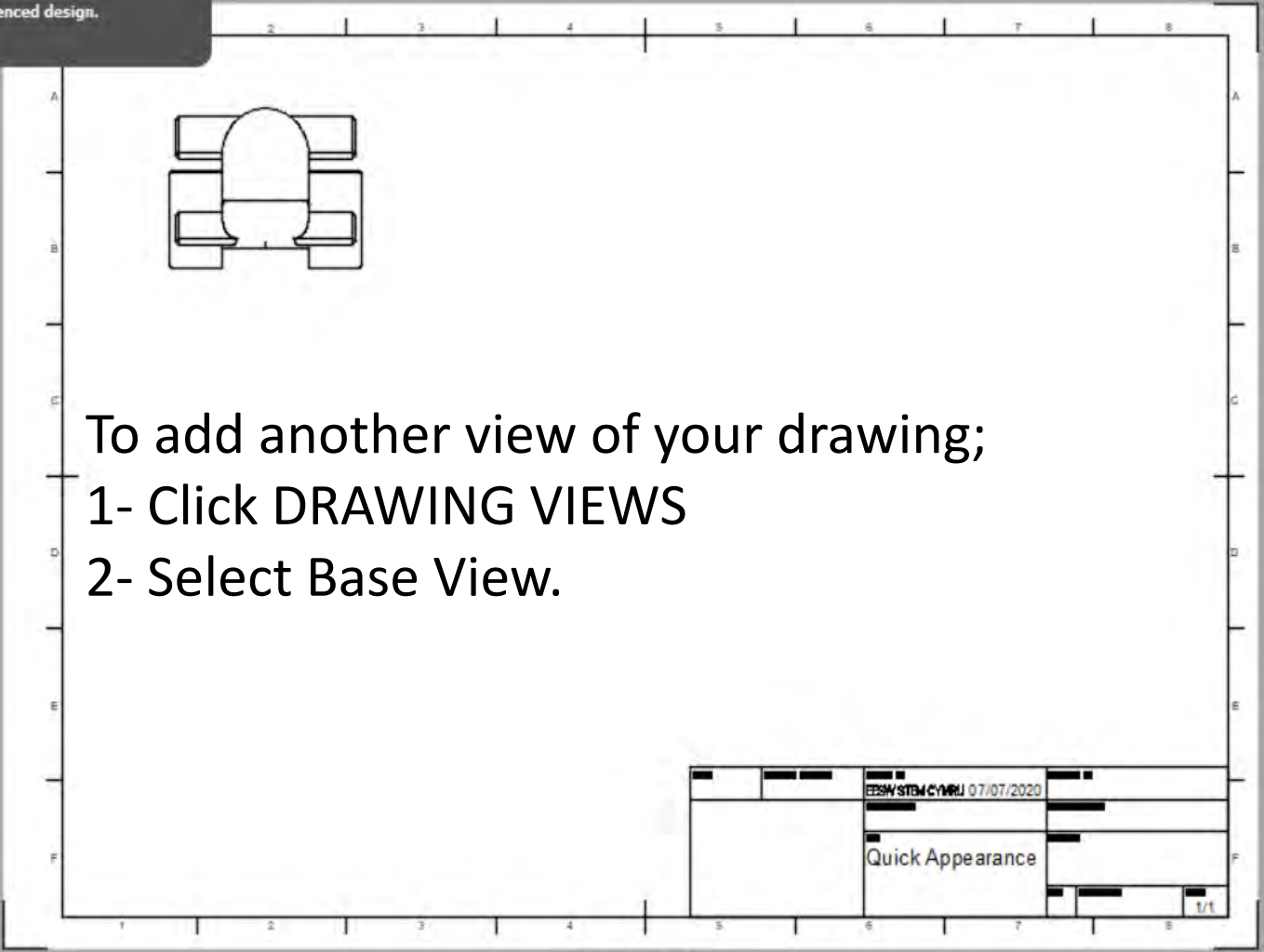
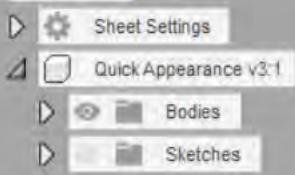


COMMENTS

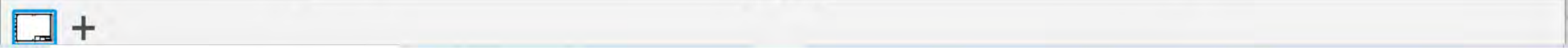
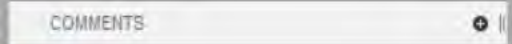


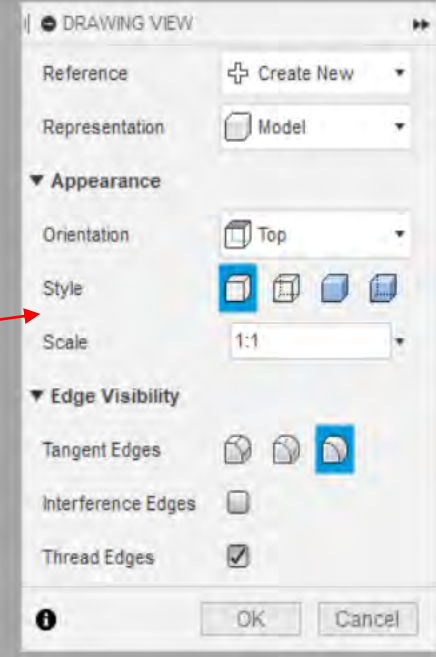
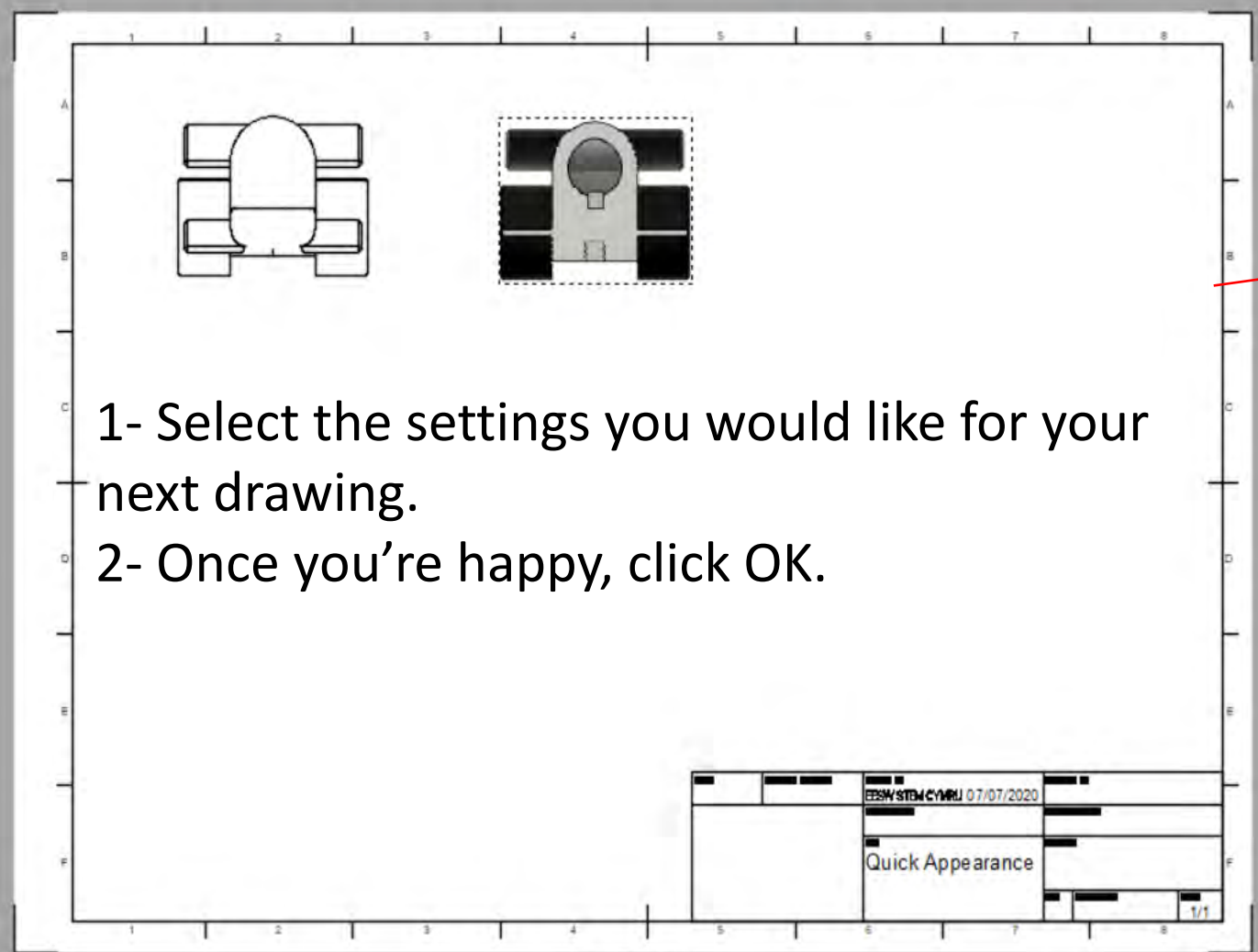
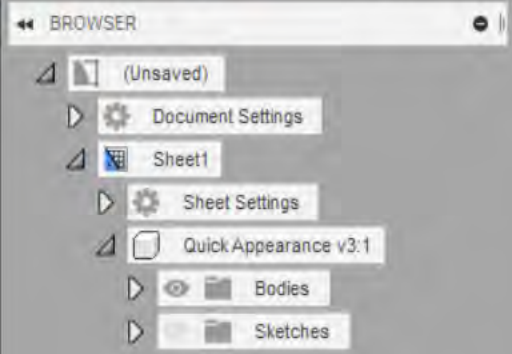


Generates a base view of the referenced design.

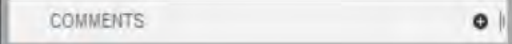


To add another view of your drawing;  
1- Click DRAWING VIEWS  
2- Select Base View.





1- Select the settings you would like for your next drawing.  
2- Once you're happy, click OK.

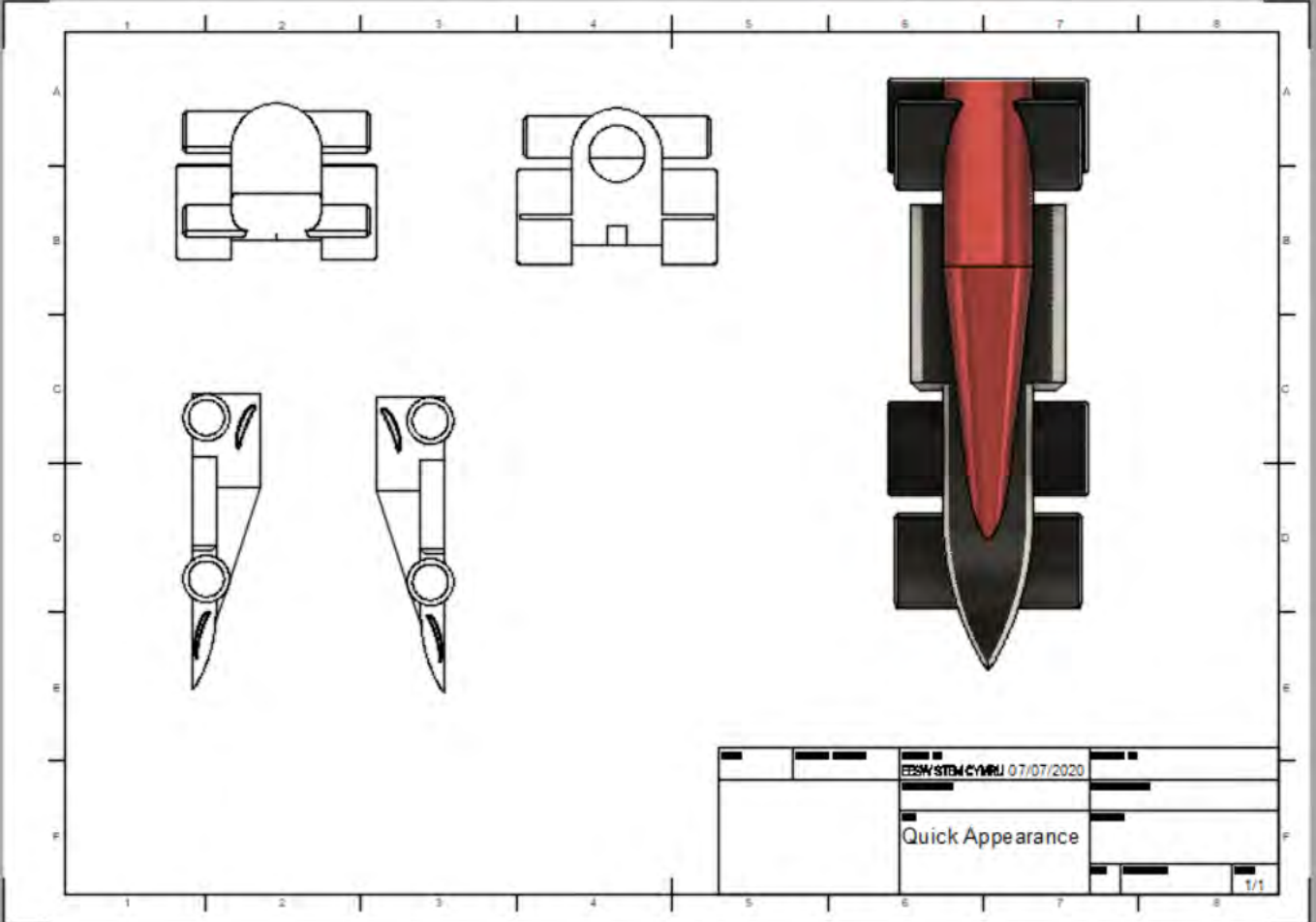


DRAWING



BROWSER

- (Unsaved)
- Document Settings
- Sheet1
  - Sheet Settings
  - Quick Appearance v3:1
    - Bodies
    - Sketches
  - Quick Appearance v3:2
    - Bodies
    - Sketches
  - Quick Appearance v3:3
    - Bodies
    - Sketches
  - Quick Appearance v3:4
    - Bodies
    - Sketches
  - Quick Appearance v3:5
    - Bodies
    - Sketches



		ESW/STW/CML/07/07/2020	
		Quick Appearance	
			1/1

COMMENTS

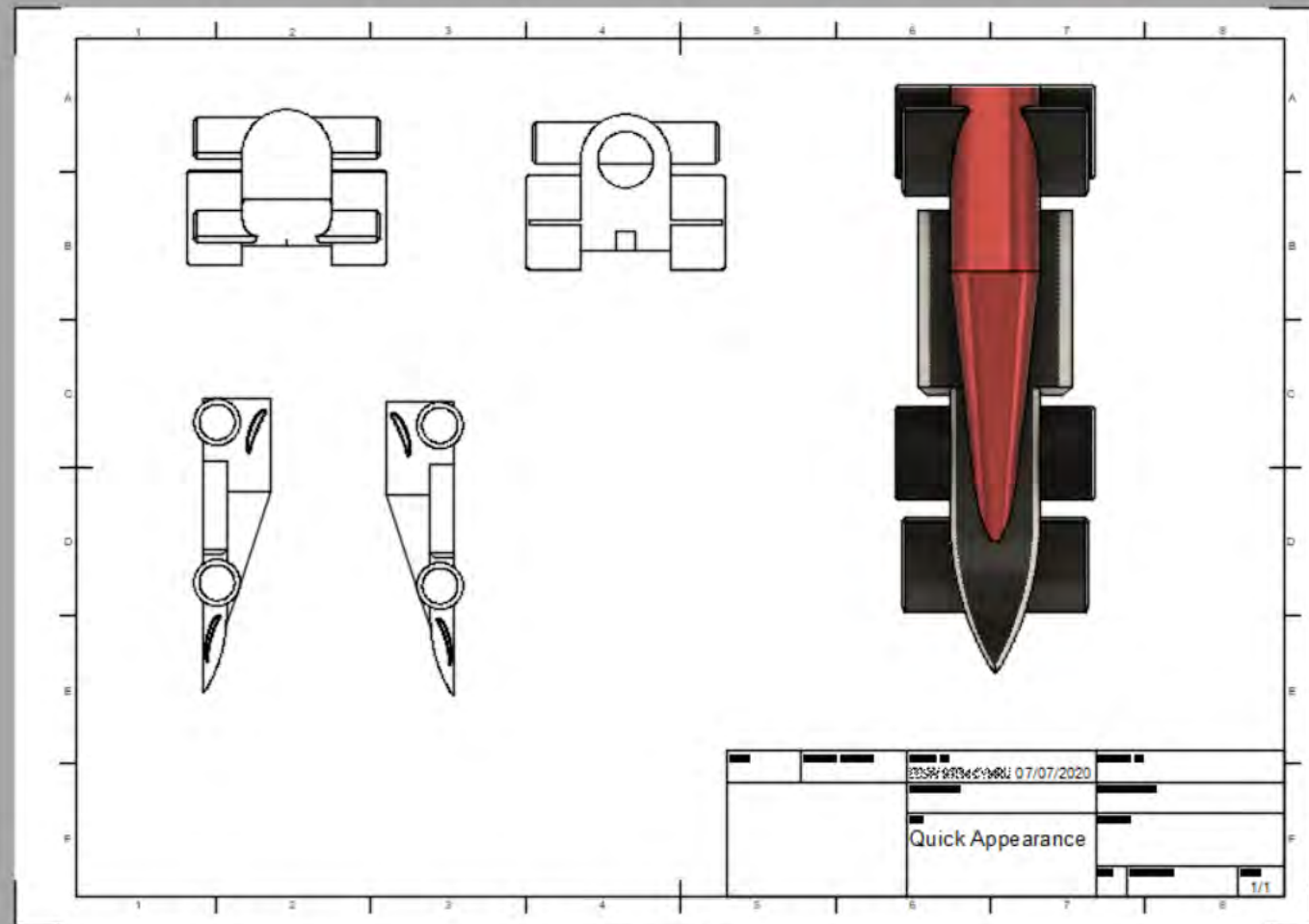


DRAWING



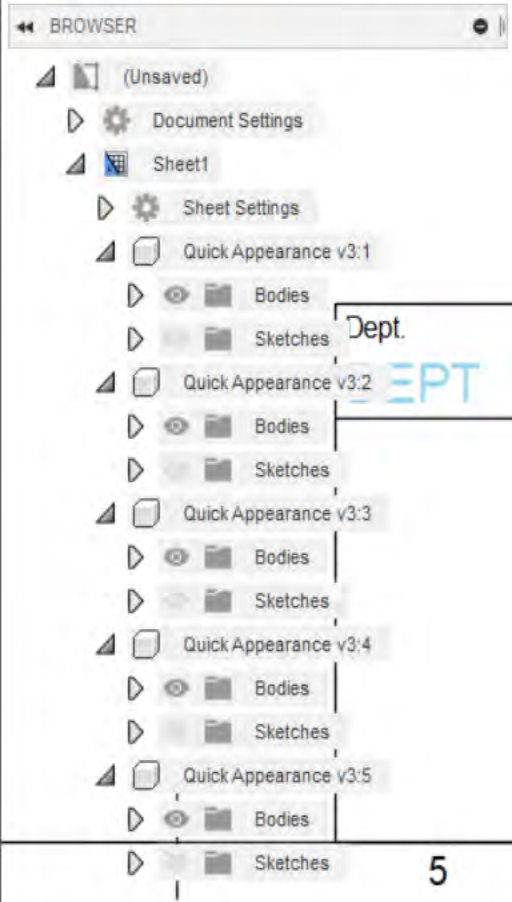
BROWSER

- (Unsaved)
- Document Settings
- Sheet1
  - Sheet Settings
  - Quick Appearance v3:1
    - Bodies
    - Sketches
  - Quick Appearance v3:2
    - Bodies
    - Sketches
  - Quick Appearance v3:3
    - Bodies
    - Sketches
  - Quick Appearance v3:4
    - Bodies
    - Sketches
  - Quick Appearance v3:5
    - Bodies
    - Sketches

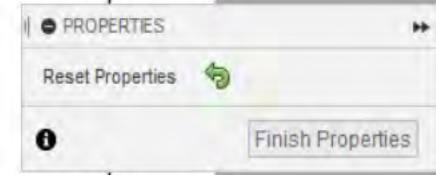


COMMENTS





- 1- To change the text in the box, double click and change as necessary.
- 2- Once finished, click Finish Properties.



Dept. DEPT	Technical reference TECHNICAL_REFERENCE	Created by Hannah	07/07/2020	Approved by APPROVED_BY	APPROVED_DATE
		Document type DOCUMENT_TYPE	Document status DOCUMENT_STATUS		
		Title Quick Appearance TITLE_2 TITLE_3	DWG No. DRAWING_NUMBER		
		Rev. REV	Date of issue DATE_OF_ISSUE	Sheet 1/1	

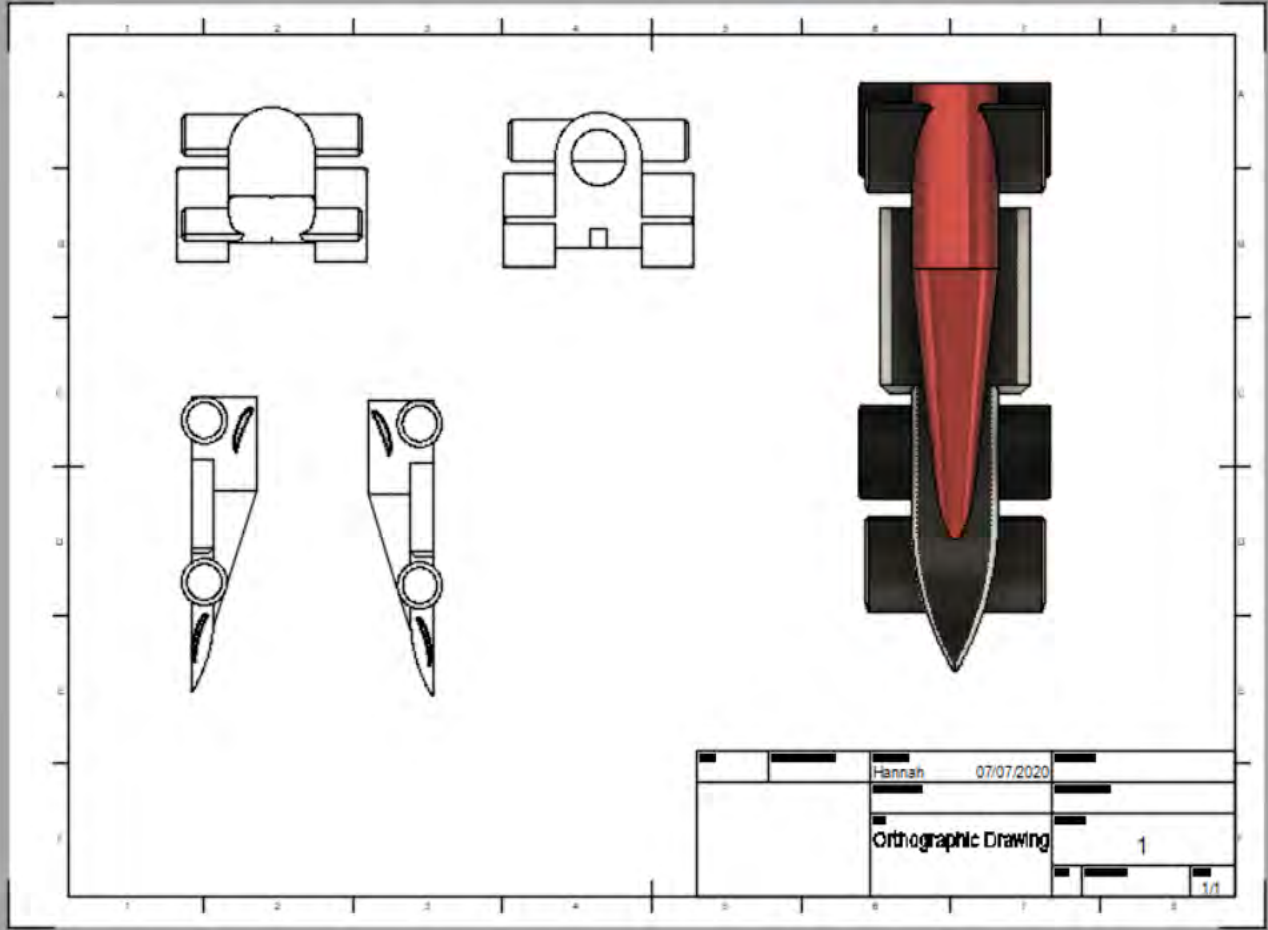


DRAWING



BROWSER

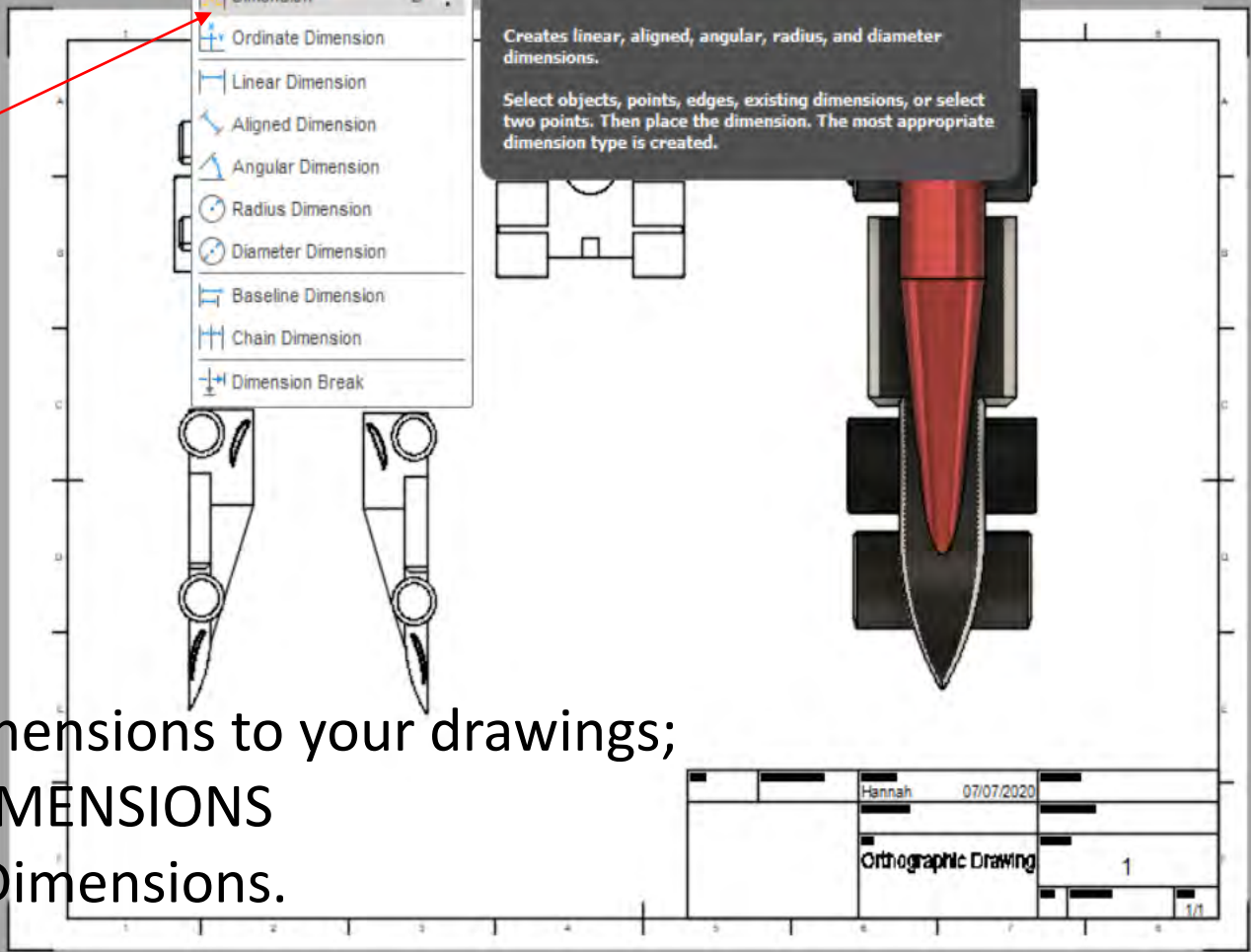
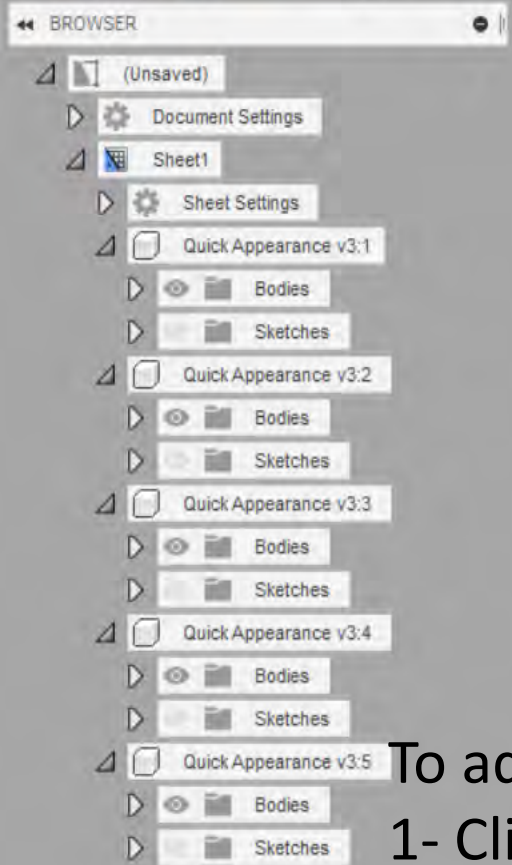
- (Unsaved)
- Document Settings
- Sheet1
  - Sheet Settings
  - Quick Appearance v3:1
    - Bodies
    - Sketches
  - Quick Appearance v3:2
    - Bodies
    - Sketches
  - Quick Appearance v3:3
    - Bodies
    - Sketches
  - Quick Appearance v3:4
    - Bodies
    - Sketches
  - Quick Appearance v3:5
    - Bodies
    - Sketches



	Hannah	07/07/2020	
	Orthographic Drawing	1	
			1/1

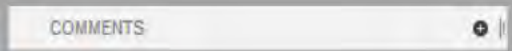
COMMENTS



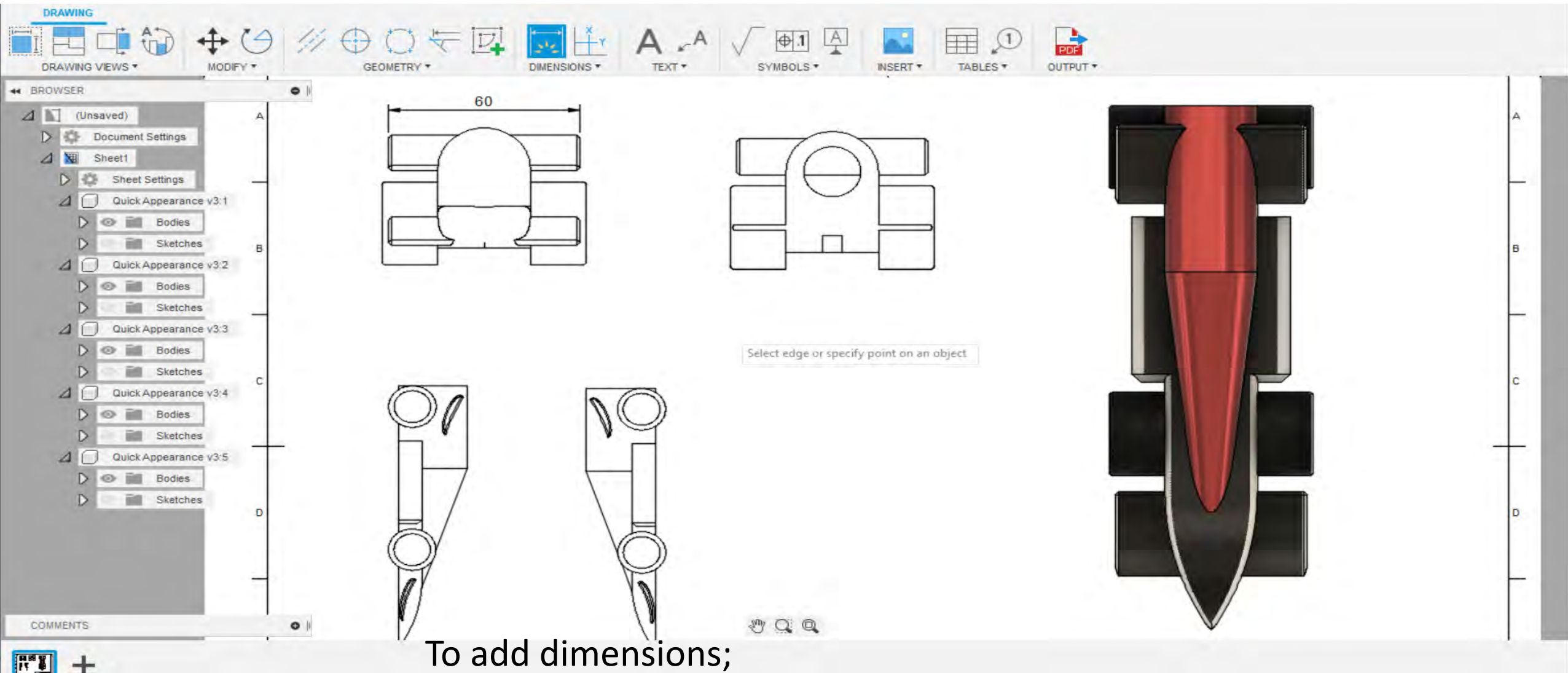


To add dimensions to your drawings;  
1- Click DIMENSIONS  
2- Select Dimensions.

Hannah	07/07/2020	
Orthographic Drawing	1	1/1







To add dimensions;

1- Click one part of the car you want to measure followed by another.

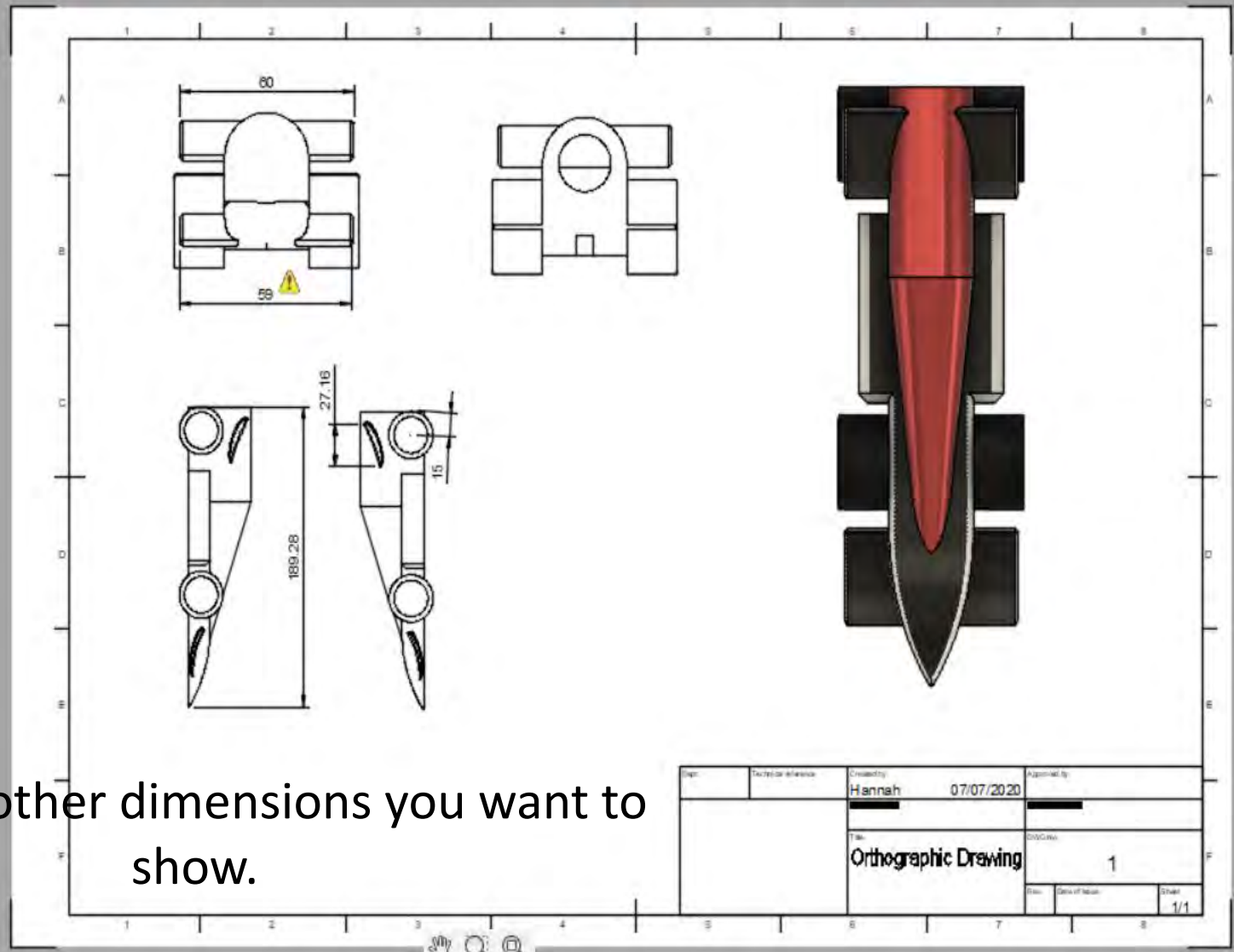
2- The dimension will automatically appear.



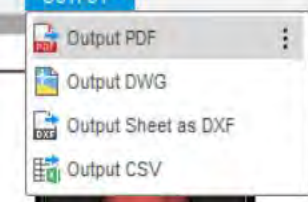
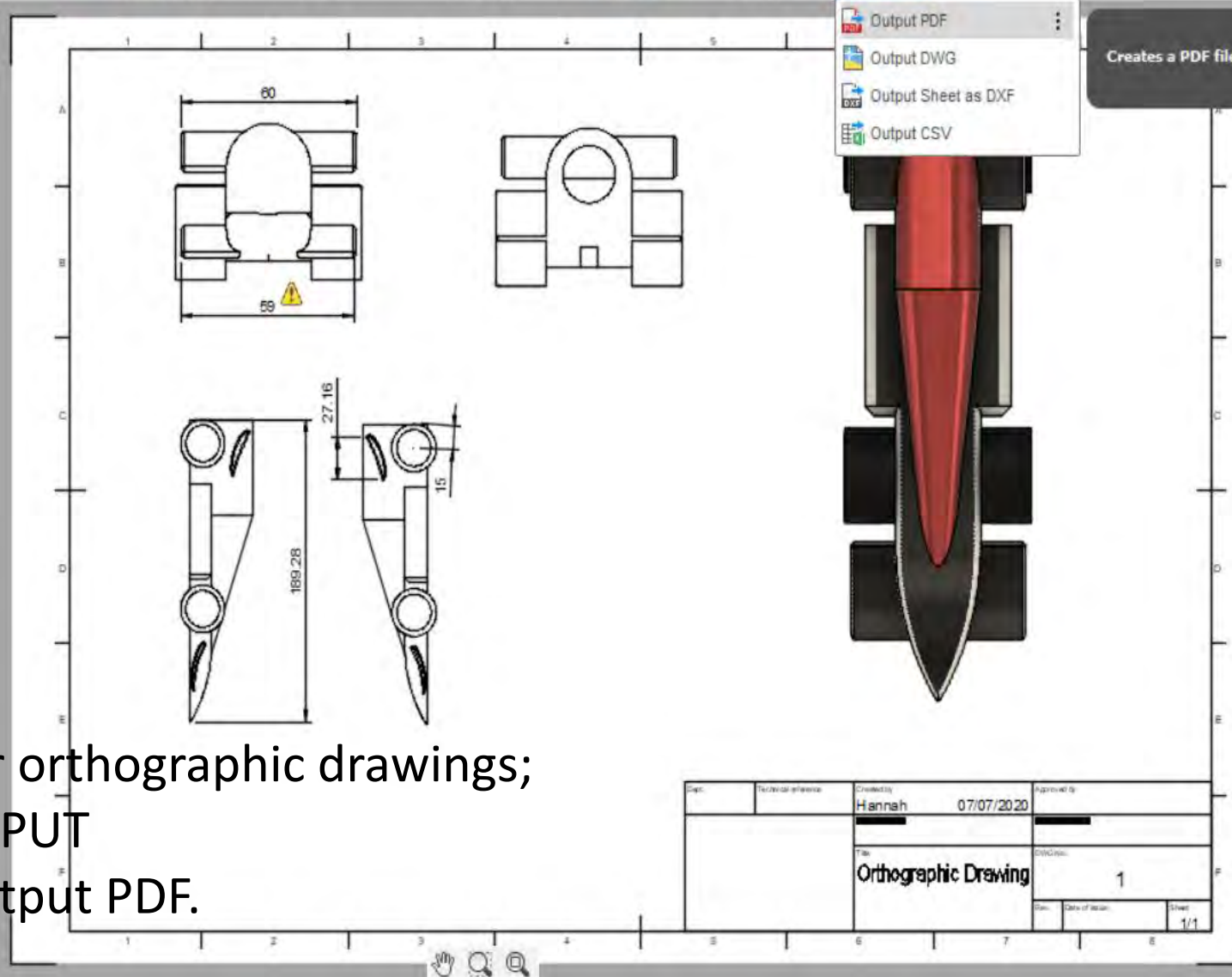
BROWSER

- (Unsaved)
- Document Settings
- Sheet1
  - Sheet Settings
  - Quick Appearance v3:1
    - Bodies
    - Sketches
  - Quick Appearance v3:2
    - Bodies
    - Sketches
  - Quick Appearance v3:3
    - Bodies
    - Sketches
  - Quick Appearance v3:4
    - Bodies
    - Sketches
  - Quick Appearance v3:5
    - Bodies
    - Sketches

COMMENTS



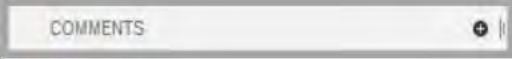
Repeat for other dimensions you want to show.

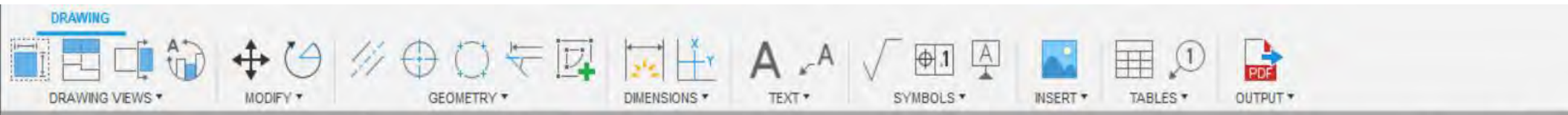


Creates a PDF file of the current drawing.

To save your orthographic drawings;  
1- Click OUTPUT  
2- Select Output PDF.

Supr.	Technical reference	Created by Hannah	07/07/2020	Approval by	
		Title Orthographic Drawing		Sheet No.	1
		Date of issue		Sheet	1/1

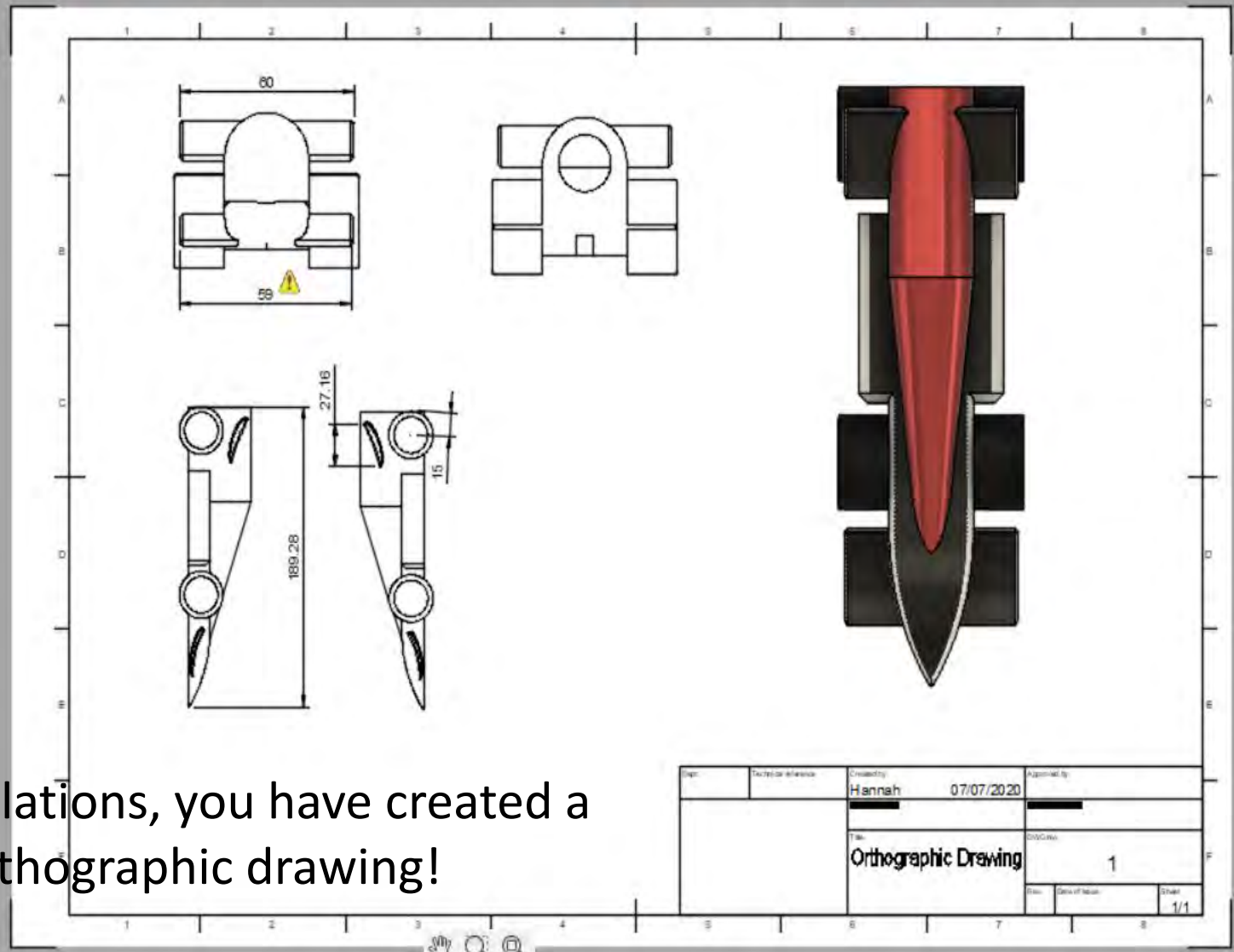




BROWSER

- (Unsaved)
- Document Settings
- Sheet1
  - Sheet Settings
  - Quick Appearance v3:1
    - Bodies
    - Sketches
  - Quick Appearance v3:2
    - Bodies
    - Sketches
  - Quick Appearance v3:3
    - Bodies
    - Sketches
  - Quick Appearance v3:4
    - Bodies
    - Sketches
  - Quick Appearance v3:5
    - Bodies
    - Sketches

COMMENTS



Page:	Technical reference:	Created by:	07/07/2020	Approved by:
		Hannah		
Title:		Orthographic Drawing		
Doc Code:		1		
Rev:	Desc of Rev:	Sheet:	1/1	

Congratulations, you have created a  
orthographic drawing!