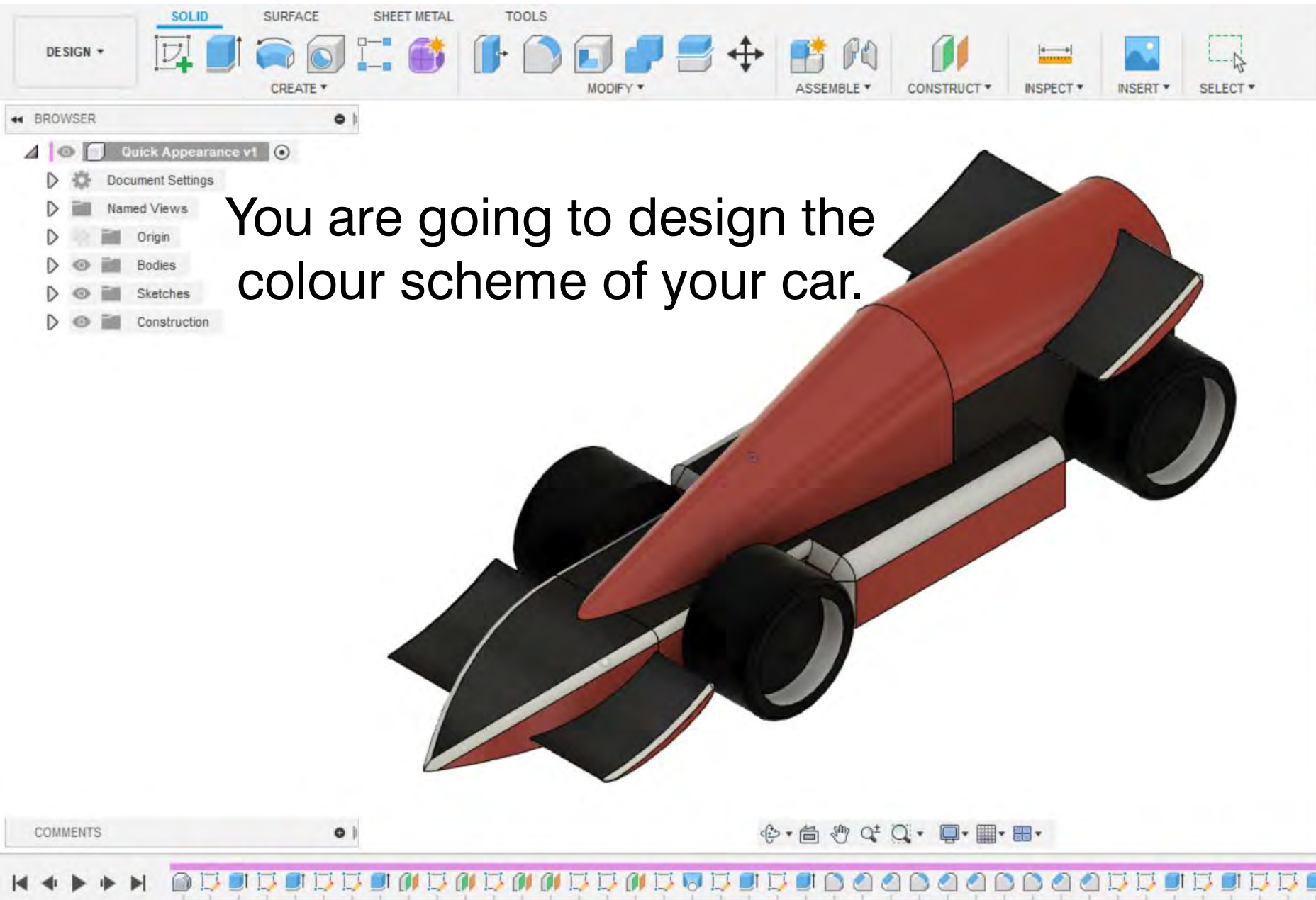


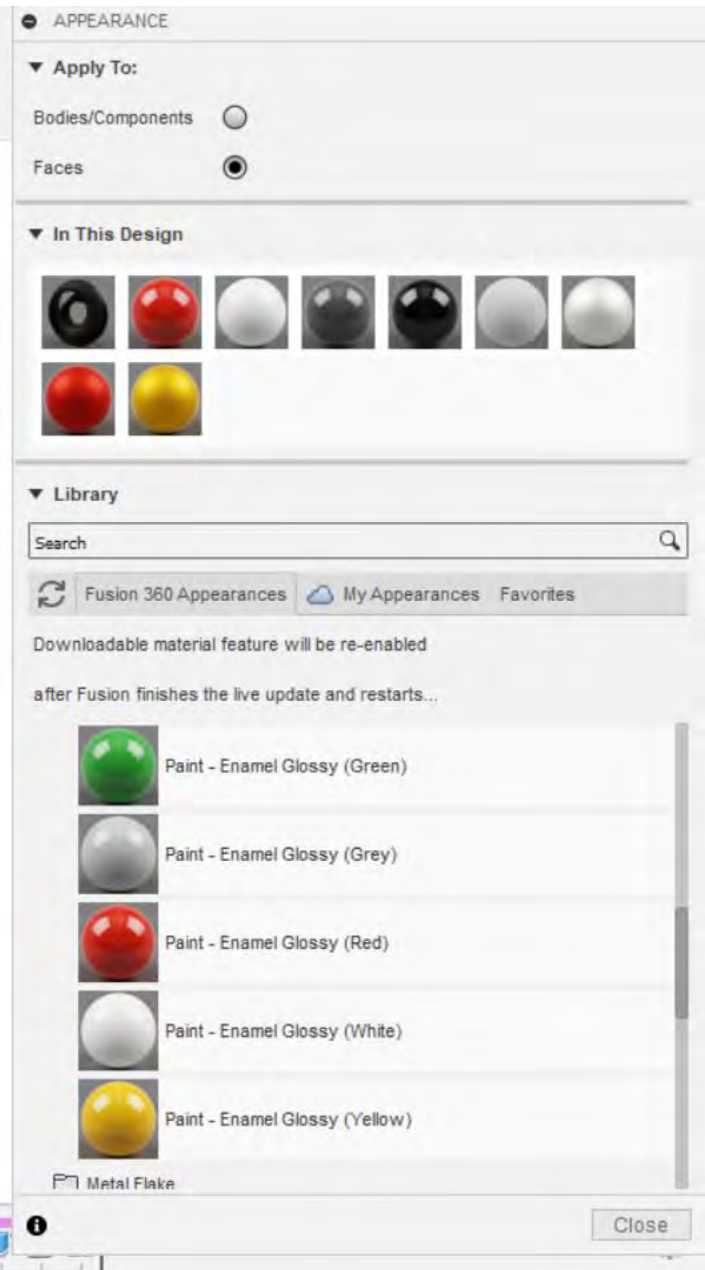
# Activity 11

# Creating appearance

PDF Guide



You are going to design the colour scheme of your car.



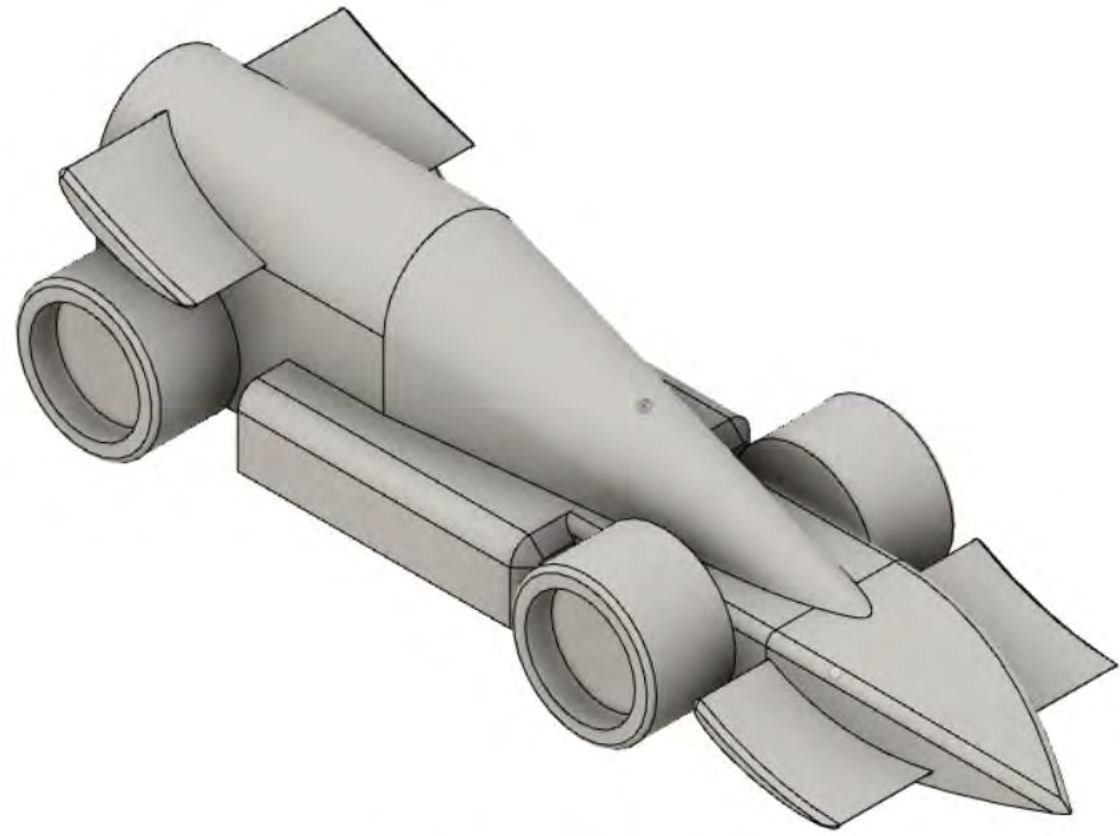
DESIGN ▾

SOLID SURFACE SHEET METAL TOOLS

CREATE ▾ MODIFY ▾ ASSEMBLE ▾ CONSTRUCT ▾ INSPECT ▾ INSERT ▾ SELECT ▾

BROWSER

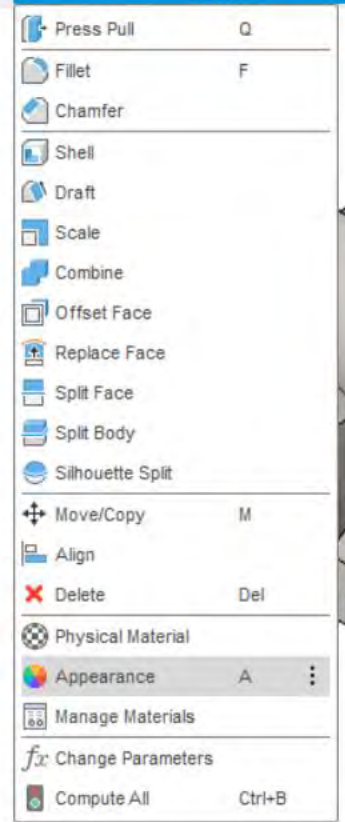
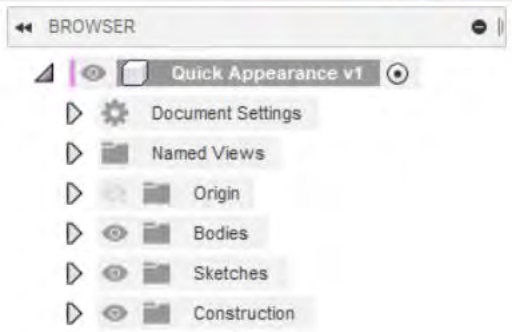
- Quick Appearance v1
- Document Settings
- Named Views
- Origin
- Bodies
- Sketches
- Construction



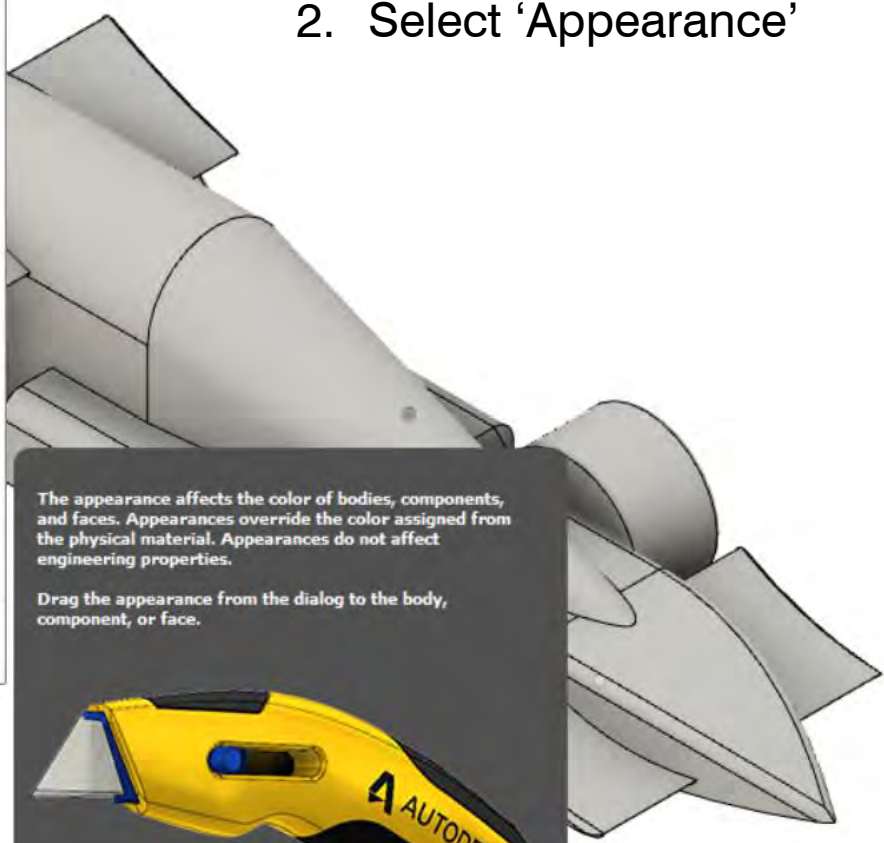
COMMENTS

Navigation icons: Home, Previous, Next, Find, View, Grid, and other utility icons.

Timeline and status bar: A long horizontal bar at the bottom containing a series of small icons representing different views and a gear icon for settings on the right.

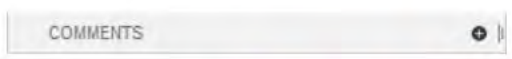


1. Select MODIFY
2. Select 'Appearance'



The appearance affects the color of bodies, components, and faces. Appearances override the color assigned from the physical material. Appearances do not affect engineering properties.

Drag the appearance from the dialog to the body, component, or face.

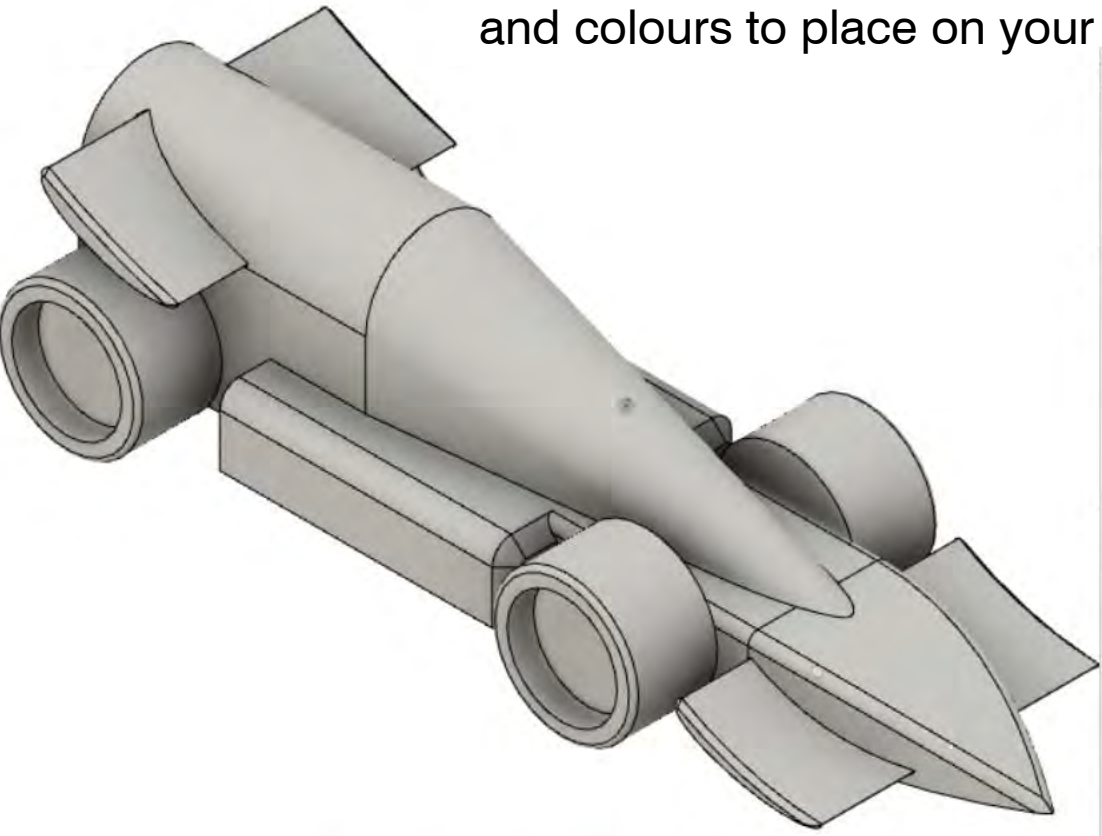




BROWSER

- Quick Appearance v1
- Document Settings
- Named Views
- Origin
- Bodies
- Sketches
- Construction

This is the appearance tool bar. Here you can choose a variety of different materials and colours to place on your car.



APPEARANCE

Apply To:  
Bodies/Components   
Faces

In This Design

Library

Search

Fusion 360 Appearances My Appearances Favorites

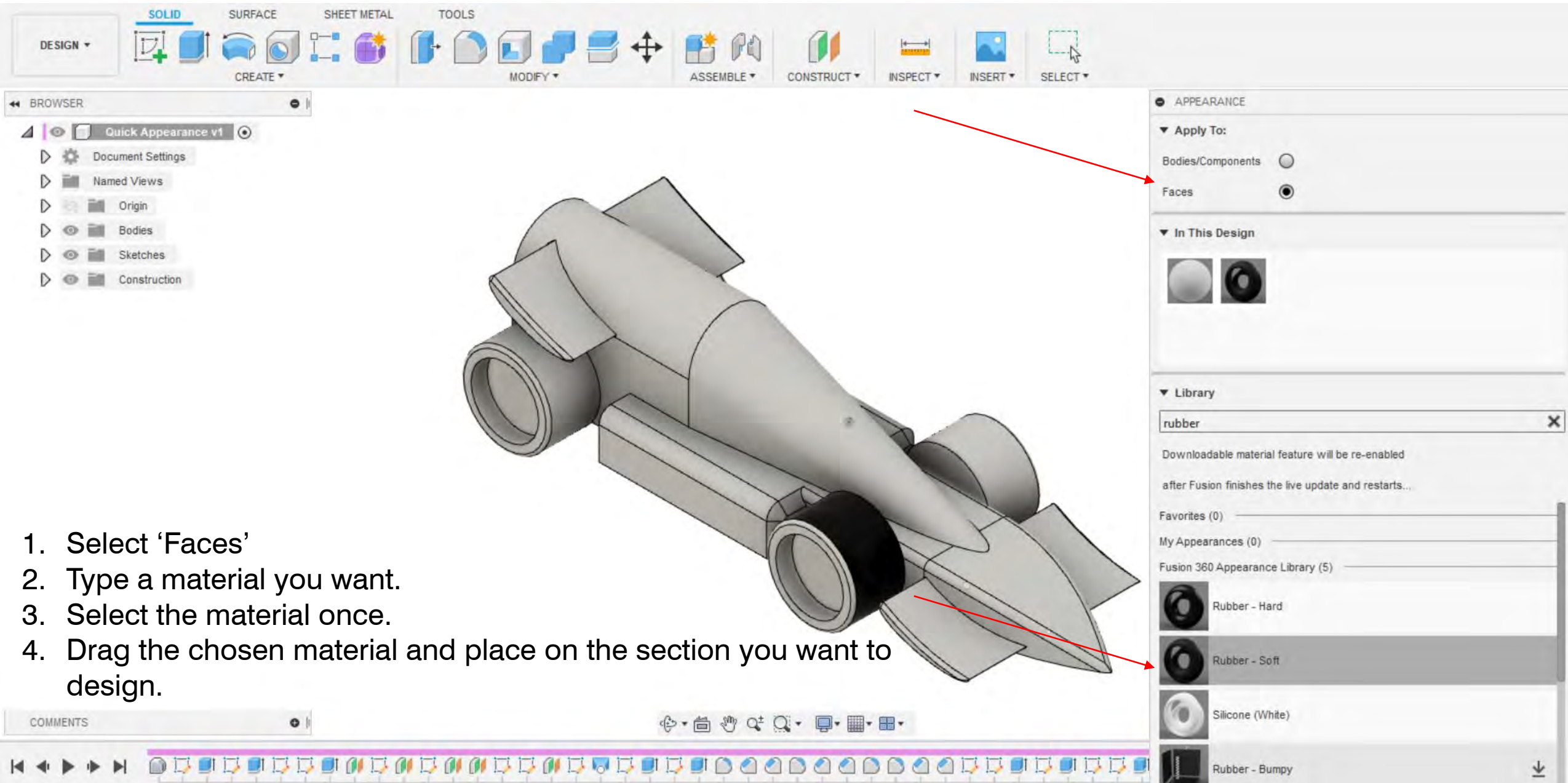
Downloadable material feature will be re-enabled after Fusion finishes the live update and restarts...

Fabric  
Glass

Close

COMMENTS

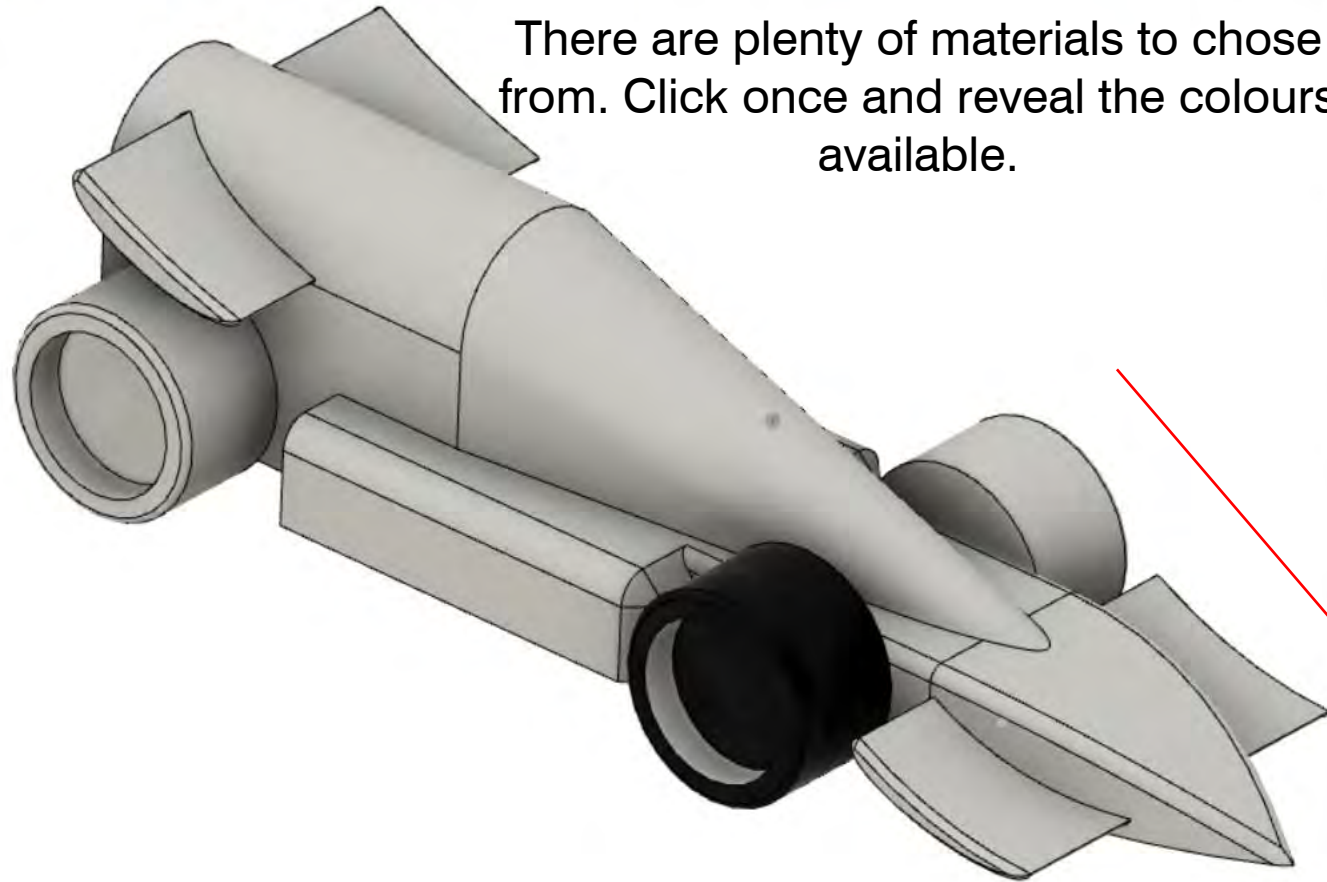






BROWSER

- Quick Appearance v1
- Document Settings
- Named Views
- Origin
- Bodies
- Sketches
- Construction



There are plenty of materials to choose from. Click once and reveal the colours available.

APPEARANCE

Apply To:  
Bodies/Components   
Faces

In This Design

Library

Search

Fusion 360 Appearances My Appearances Favorites

Downloadable material feature will be re-enabled after Fusion finishes the live update and restarts...

- Leather and Cloth
- Liquid
- Metal
- Mirror
- Miscellaneous
- Other
- Paint
- Plastic
- Stone
- Wood

COMMENTS



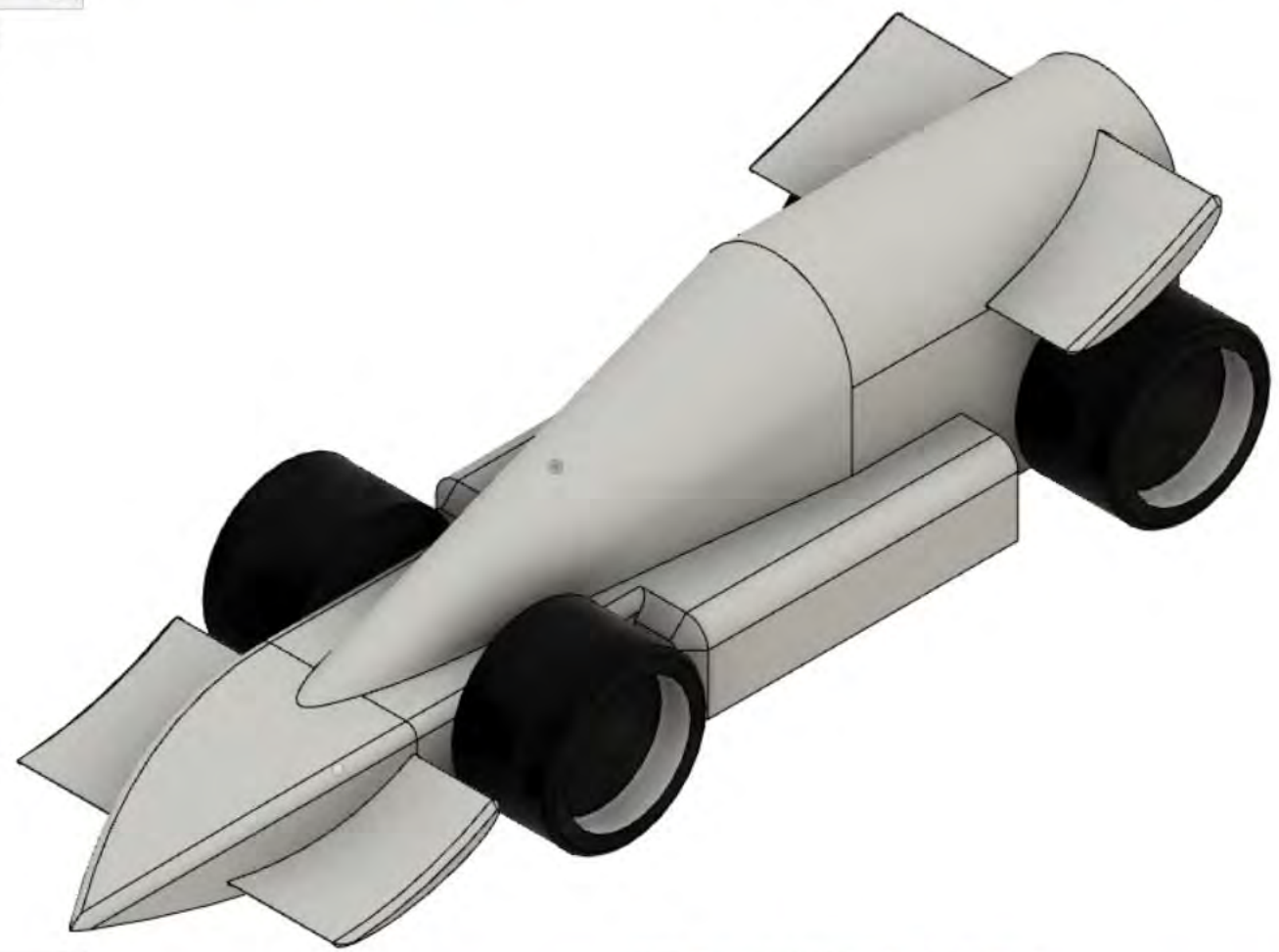
DESIGN ▾

SOLID SURFACE SHEET METAL TOOLS

CREATE ▾ MODIFY ▾ ASSEMBLE ▾ CONSTRUCT ▾ INSPECT ▾ INSERT ▾ SELECT ▾

BROWSER

- Quick Appearance v1
- Document Settings
- Named Views
- Origin
- Bodies
- Sketches
- Construction



APPEARANCE

Apply To:

Bodies/Components

Faces

In This Design

Library

Search

Fusion 360 Appearances My Appearances Favorites

Downloadable material feature will be re-enabled after Fusion finishes the live update and restarts...

Leather and Cloth

Liquid

Close

COMMENTS

Navigation icons: pan, rotate, zoom, etc.

Timeline and status bar with various icons and a gear icon on the right.

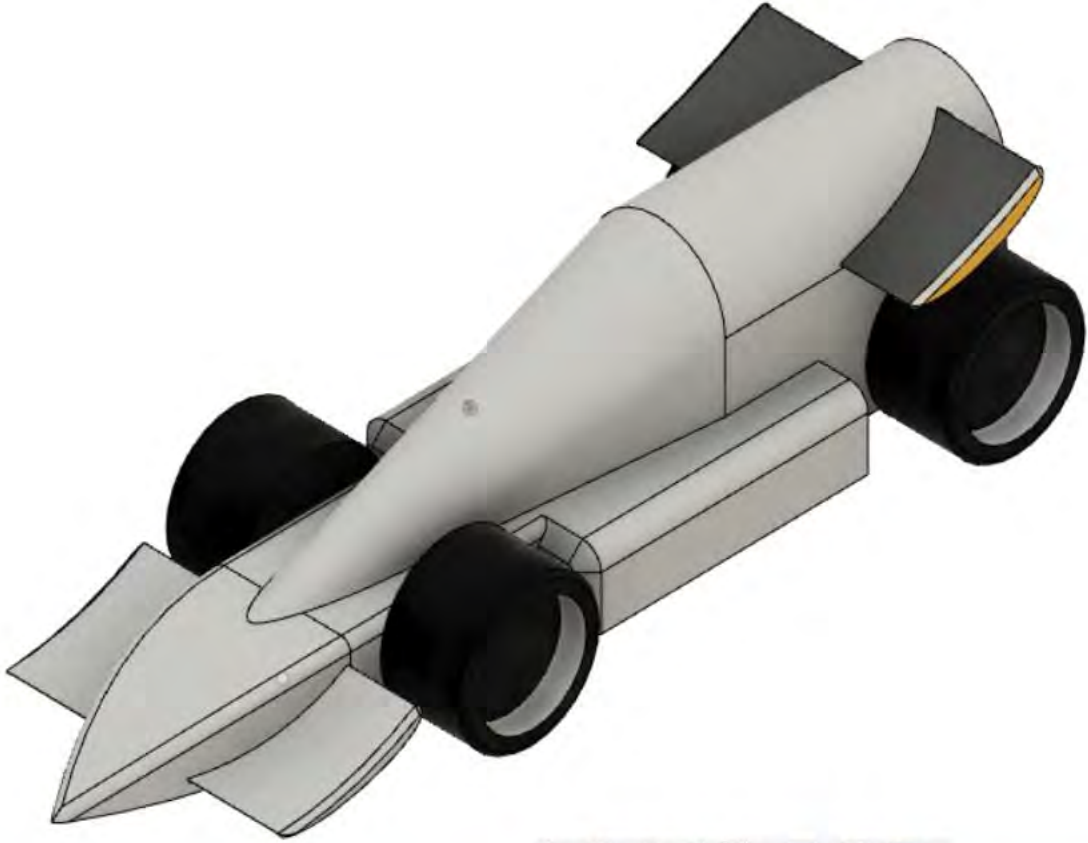




BROWSER

- Quick Appearance v1
- Document Settings
- Named Views
- Origin
- Bodies
- Sketches
- Construction

You can change the colours until you find the design you like.



APPEARANCE

Library

Search

Fusion 360 Appearances My Appearances Favorites

Downloadable material feature will be re-enabled after Fusion finishes the live update and restarts...

- Paint - Metallic (Dark Grey)
- Paint - Metallic (Green)
- Paint - Metallic (Red)
- Paint - Metallic (Silver)

Close

COMMENTS

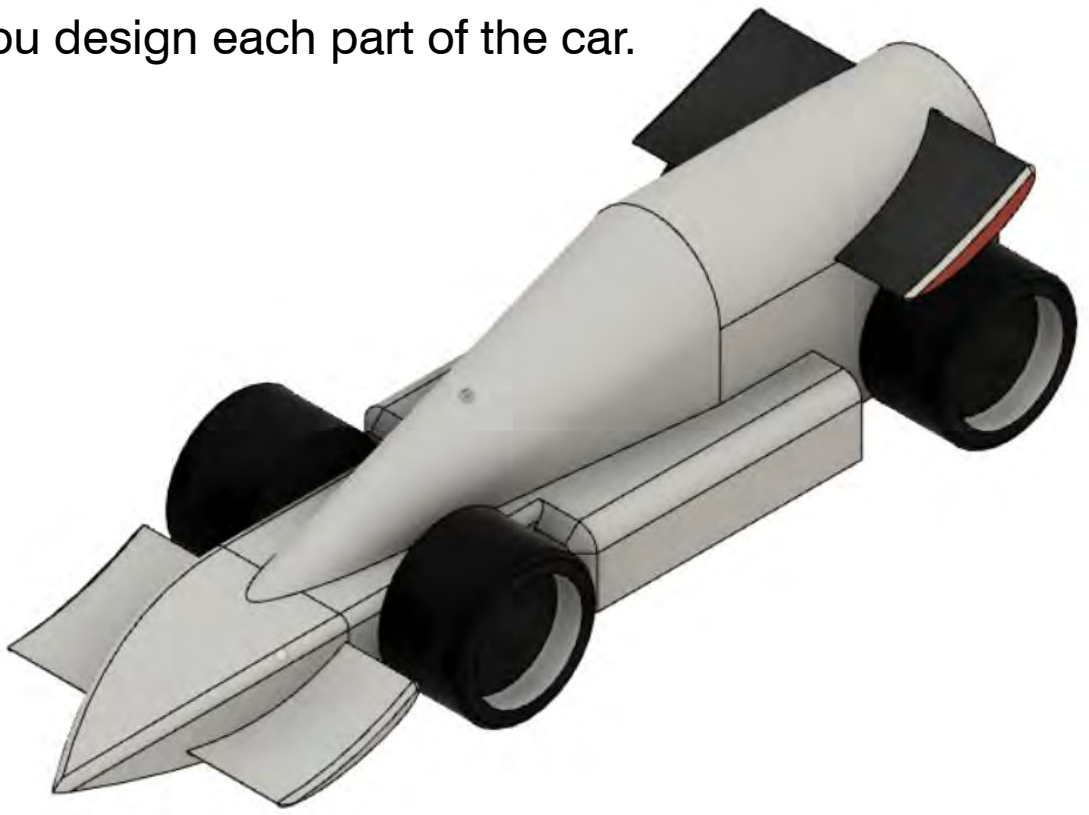




BROWSER

- Quick Appearance v1
- Document Settings
- Named Views
- Origin
- Bodies
- Sketches
- Construction

Ensure you design each part of the car.



APPEARANCE

Library

Search

Fusion 360 Appearances My Appearances Favorites

Downloadable material feature will be re-enabled after Fusion finishes the live update and restarts...

- Paint - Enamel Glossy (Green)
- Paint - Enamel Glossy (Grey)
- Paint - Enamel Glossy (Red)
- Paint - Enamel Glossy (White)
- Paint - Enamel Glossy (Yellow)

Metal Flake

Close

COMMENTS



Congratulations, you have designed your colour scheme of your car.

